

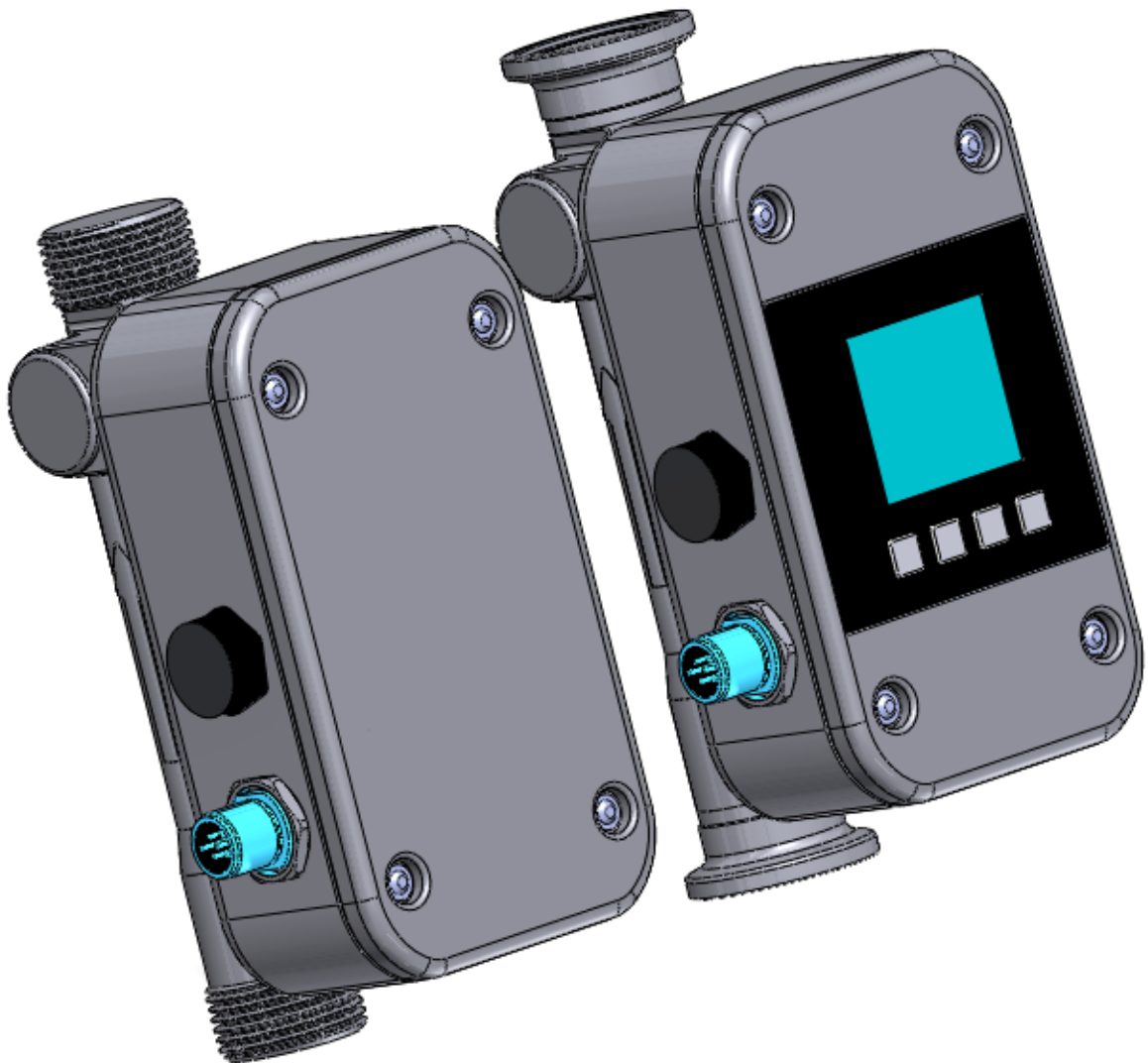
BA 010E/FM44i/03.15

Valid starting from Hardware V 2.1
Software V 1.28

Flowmax[®] 44i

Ultrasonic flow metering / dosing device

Operating manual



General safety instructions

Please always observe the following safety instructions!

Please pay attention to the safety instructions with the following pictograms and signal words in these operating instructions:



IMPORTANT!

IMPORTANT! indicates situations or cases which, if not avoided, could result in damage or failure of the Flowmax 44i equipment.



WARNING!

WARNING! indicates general hazardous situations or cases which, if not avoided, could result in serious injury or death.

NOTICE!

NOTICE! is used to lead users to helpful information not related to personal injury.

Intended use

- The flow meter Flowmax 44i may only be used for measuring the flow of pure, homogeneous liquids.
- The Flowmax 44i is not intended for use in medical applications.
- The volume flow meter Flowmax 44i is built operationally safe in accordance with the latest state of the art technologized developments and industry standard EN 61010 regulations (corresponds to VDE 0411 "Safety specifications for electrical measurement, control and laboratory devices").
- The manufacturer is not liable for any injury, damage or harm due to inappropriate or unintended use or modifications of the flow meter. Conversions and/or changes to the flow meter may only be made, if they are expressly performed in accordance with the operating instructions in this operating manual.

Personnel for installation, commissioning and operation

- **Assembly, electrical installation, commissioning and maintenance of the flow meter must be carried out by qualified, trained personnel. The qualified personnel must have read and understood the operating instructions in this operating manual and must follow the operating instructions in this manual.**
- **The installer has to ensure that the flow meter is correctly connected according to the electrical connection diagrams in this operating manual.**
- **Serious injury or death from electric shock may occur if wiring, installation, disassembly or remove of wires is performed while electrical power is energized**



WARNING!

Technological progress

The manufacturer reserves the right to revise, alter, or modify the flow meter to the most current technology without special prior notice. Further information about the latest updates and potential additions to these operating instructions are available from MIB.

Tablet of contents

ULTRASONIC FLOW METERING / DOSING DEVICE	1
General safety instructions	2
1. Planning information	4
1.1 Areas of application	4
1.2 Measuring principle	4
1.3 Operational safety	5
2. Assembly and installation	5
2.1 Installation instructions	5
2.2 Assembly of the flow meter	6
2.3 Electrical wiring	9
3. Commissioning	11
3.1 Operation	11
3.2 Functionalities of flow meter and default settings	15
3.3 Overview of default settings	23
3.4 General Information	24
4. Exchange of measuring device	25
5. Technical specifications	26
5.1 Dimensions and weight	26
5.2 Technical specifications	28
6. Accessories	30
7. Shipment	29
Appendix	31

Table of figures

Fig. 1: Presentation of the principle of ultrasonic flow measuring	4
Fig. 2: Installation position of Flowmax 44i	5
Fig. 3: Mounting examples for Flowmax 44i	6
Fig. 4: Mounting possibilities	7
Fig. 5: Mounting the Flowmax 44i	7
Fig. 6: Flowmax 44i with hot media	8
Fig. 7: Pin code: Connection plug / socket for 5-pin version	9
Fig. 8: Pin code: Connection plug / socket for 8-pin version	10
Fig. 9: Operating with the key pad	12
Fig. 10: Menu organization for 5-pin version	13
Fig. 11: Menu organization for 8-pin version	14
Fig. 12: Function of the creeping suppression illustrated with 0.6 l/min	17
Fig. 13: Connecting output Q1 to external counter	21
Fig. 14: Connecting output Q2 to relay	22

1. Planning information

1.1 Areas of application

The flow measurement device in the Flowmax 44i is designed to measure dynamic flow in pipes and tubes. This flow meter is suitable for liquids only. The Flowmax 44i is used in:

- Chemicals supply for controlling, logistics, monitoring
- Cooling systems, logistics, monitoring
- Process equipment for control and monitoring of formulas
- Valve control for continuous release of liquid volumes
- Supply with de-ionized water
- Very dynamic liquid processes with dosing times of below 1 second

Flowmax 44i has the following features and benefits:

- No movable parts, therefore no wear
- High repeatability
- Easy to clean
- Safe operation
- Compact design
- Integrated detection of empty conduits
- Integrated dosing function with pre-set and adjustable amounts
- Chemical resistant
- Integrated display with keypad

1.2 Measuring principle

It usually takes more energy to swim against the flow than with the flow. The ultrasonic flow measurement is based on the phase-difference approach:

Two ultrasonic-sensors located opposite from each other alternatively transmitting and receiving ultrasonic signals. If there is no liquid flow both sensors receive the transmitted ultrasonic signals in the same phase, i.e. without phase difference. If liquid is flowing there is a phase shift. It differs when measured in direction of the flow than when measured against the direction of the flow. This phase difference is directly proportional to the flow rate.

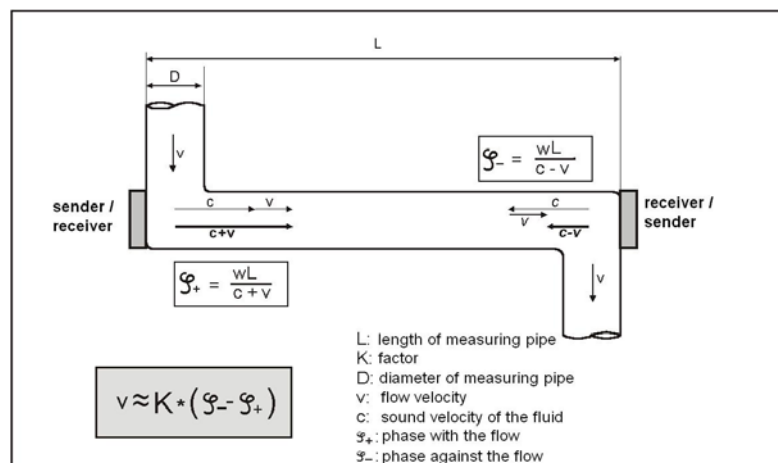


Fig. 1: Presentation of the principle of ultrasonic flow measuring

1.3 Operational safety

Comprehensive self-tests ensure highest possible safety.

The protection class is IP 67.

Flowmax 44i meets the general EMC immunity requirements according to CE, EN 61000-6-3, EN 61000-4-2, EN 61000-4-3, EN 61000-4-4, EN 61000-4-5, EN 61000-4-6. the general EMC immunity requirements according to CE, EN 50081-2, and EN 50082-2.

Flowmax 44i meets the safety requirements concerning the Protective Extra Low Voltage directive according to EN 50178, SELV, PELV.

2. Assembly and installation

2.1 Installation instructions

The housing of Flowmax 44i is labeled with an arrow symbolizing the direction of the flow measurement. The flow meter has to be installed in a way so that the flow-through is in the same direction as the arrow symbol.

NOTICE!

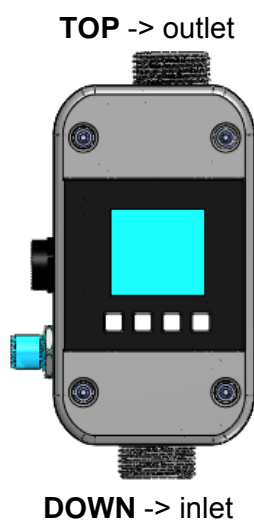


Fig. 2: Installation position of Flowmax 44i

For fastest possible bubble detection it is important to keep the pipe distance from tank to Flowmax 44i as short as possible. Accurate measurement can only be assured, if the pipe is completely filled and the liquid does not outgas.

Notwithstanding it may be advantageous for dosing applications to install the Flowmax 44i as close as possible to the dosing valve, since soft pipes increases the cross-section depending on the system pressure. This may lead to repeatable differences.

Insure that no cavitations dissolve from the measured liquid. Depending on the measured liquid it can be helpful to have enough back pressure on the outlet of Flowmax 44i to avoid cavitations. Insure all mechanical connections are tight. Absolutely do not use Teflon tape for sealing!

NOTICE!

Particles present in the flow stream may result in measuring errors.

When using pumps, Flowmax 44i must be installed in flow direction on the pressure side, on order to ensure sufficient pressure.

Do not exceed the maximum pressure allowance for of the Flowmax 44i (see section 5.2 Technical specifications). Exceed the maximum pressure or the maximum torque can lead to destruction or rupture of the Flowmax 44i.



WARNING!

For correct volume flow measurements straight and unobstructed inflow and outflow distances have to be observed. Starting from the connection thread these straight and unobstructed flow zones must be:

Nominal diameter	DN10 3/8"	DN15 1/2"	DN20 3/4"	DN25 1"
Inflow distance	10cm 3,94"	30cm 11,81"	40cm 15,75"	40cm 15,75"
Outflow distance	0cm 0"	5cm 1,97"	10cm 3,94"	20cm 7,87"

Always make sure that the maximum torque of the nuts for the hydraulic connections is not exceeded. Use the delivered seals and the maximum torque depending on the diameter:



IMPORTANT!

Nominal diameter	DN10 3/8"	DN15 1/2"	DN20 3/4"	DN25 1"
Inch thread, torque:	2Nm 1.5 ft-lbs	3Nm 2.2 ft-lbs	4Nm 3.0 ft-lbs	6Nm 4.4 ft-lbs

2.2 Assembly of the flow meter

The flow meter is mounted into a pipe system by using the mechanical connection. Flowmax 44i should be mounted vertically into the pipe for the best measuring performance. Do not install the flow meter after a dosing valve where the flow meter can run empty. Placing the flow meter after a dosing valve and allowing it to run empty will cause a measuring deviation at the next measurement. To avoid bubbles in the liquid, Flowmax 44i should be installed on the pressure side of the pump.

NOTICE!

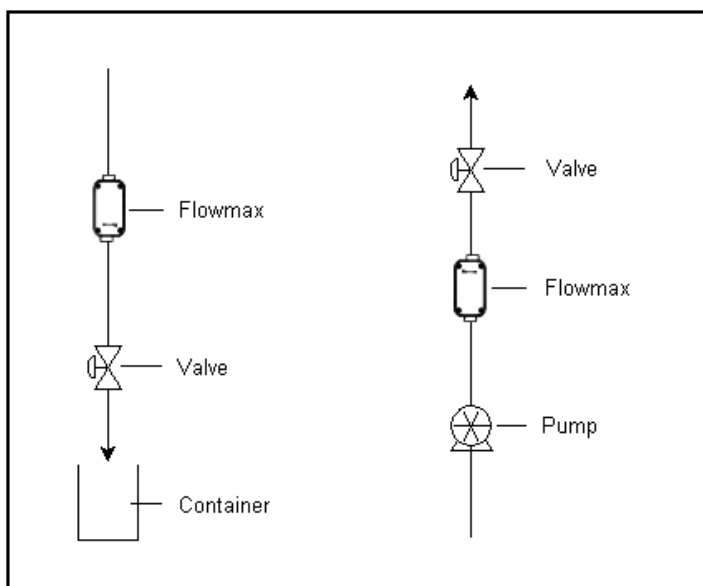


Fig. 3: Mounting examples for Flowmax 44i

If it is not possible to mount the flow meter vertically, then mount the instrument in a location where the pipe will be filled at all times. The best measuring result is achieved if bubbles do not pass through Flowmax 44i.

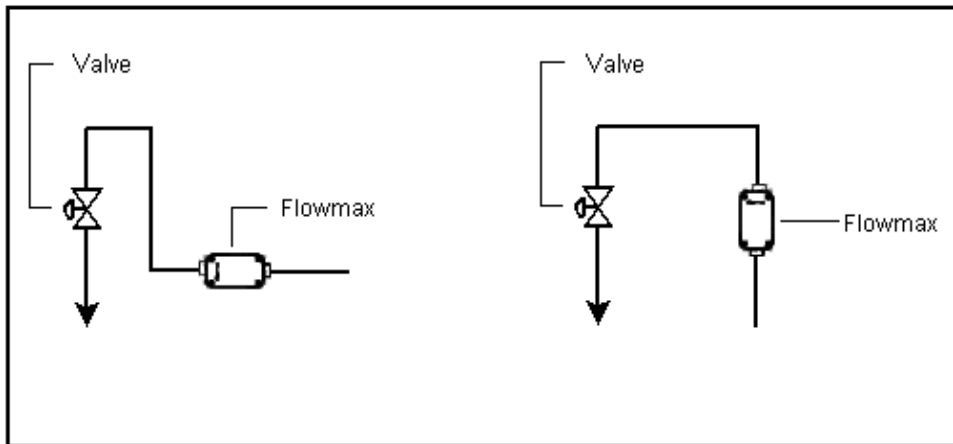


Fig. 4: Mounting possibilities

For applications with a “clean design” for which it is necessary to completely drain the pipe system, we recommend mounting the flow meter in the vertical position. Residual liquid may remain inside the device if flow meter is mounted horizontally.

Vibrations or mechanical forces may decrease measuring accuracy. Mounting the flow meter using two clamps will reduce vibrations or movements. Use the clamps as seen in the figure below at the inlet and outlet connections of Flowmax 44i.

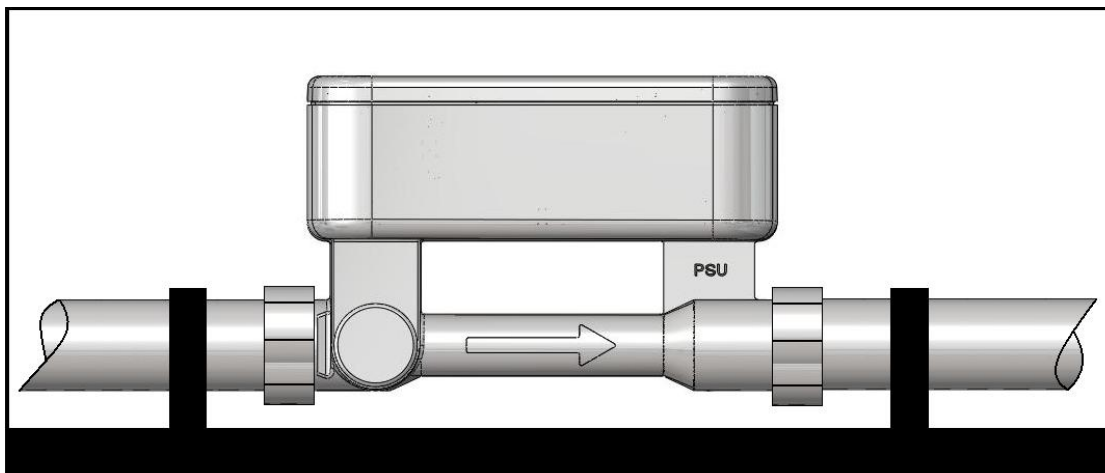


Fig. 5: Mounting the Flowmax 44i

Flowmax 44i must be installed without mechanical tensions on the existing pipe system. The flow meter may be damaged if there is tension on the existing pipe system. Set the axial channel offset to 5mm when mounting the flow meter (For details see section 5.1 Dimensions and weight).

Non-compliance of the installation instructions may result in tearing of the housing, liquid may leak out.



IMPORTANT!



WARNING!

Applications with hot liquids:

If Flowmax 44i is used in applications with liquid temperatures hotter than 60°C and mounted horizontally then the flow meter should be mounted with the electronic housing on the underside to reduce exposure to rising heat. If Flowmax 44i is mounted vertically, heat damage is not an issue.

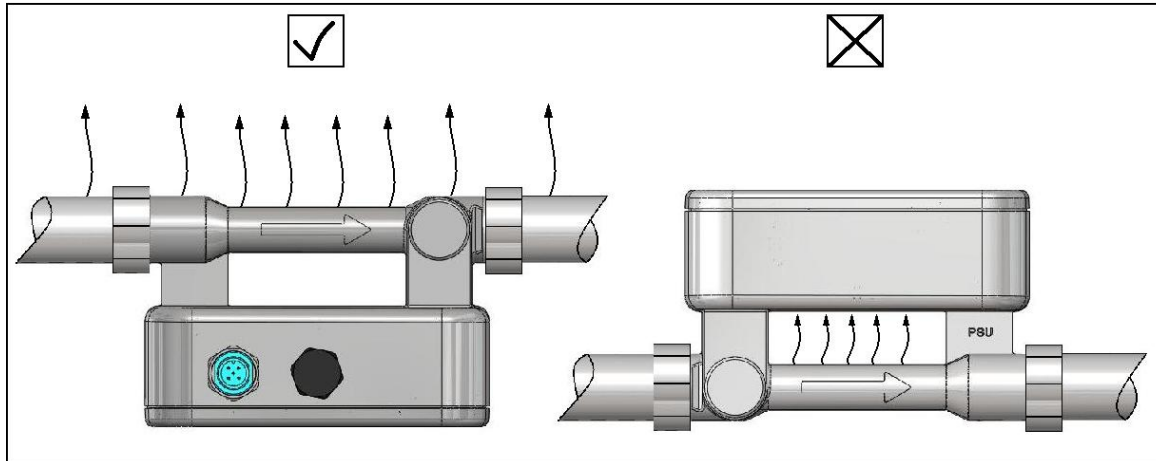
**IMPORTANT!**

Fig. 6: Flowmax 44i with hot liquids

2.3 Electrical wiring

Serious injury or death from electric shock may occur if wiring, installation, disassembly or remove of wires is performed while electrical power is energized.

Always shut off or disconnect electrical power at service panel and lock switch or breaker and tag to prevent energizing electrical power during work or while Flowmax 44i is not assembled and installed.

Wiring installation, disassembly and removal must be performed by qualified persons experienced and knowledgeable about electrical work.



WARNING!



Fig. 7: Pin code: Connection plug / socket for 5-pin version

Connector cable pin configuration defined by manufacturer.

The outlets may be re-programmed for specific applications.

Pin	Function	Description
1	L+	Voltage supply: 18...30 VDC
2	Pulse output Q1 alternative: 1. Empty-pipe output 2. Dosing output 3. Upper or Lower Limit-output 4. Negative flow	Digital Output Q1 Freely adjustable ranging from 0.1 to 3000 ml/pulse in 0.1 ml/pulse steps, npn-Transistor, max. load 30V/100mA. Max. Voltage must be less than the supply voltage Configurable output of 0V or 24V when pipe is empty. Configurable output of 0V or 24V Configurable output of 0V or 24V when reaching upper or lower limit Configurable output of 0V or 24V when liquid flows in negative direction
3	GND	Ground: 0 V
4	Communication	Communication interface
5	Analog output QA	4...20mA; 0...20mA Example: 0l/min => 4mA 36l/min => 20mA Empty pipe Alert => 3.5mA (4-20mA, depending on the configured limits)

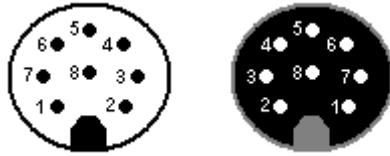


Fig. 8: Pin code: Connection plug / socket for 8-pin version

Connector cable pin configuration defined by manufacturer.

The outlets may be re-programmed for specific applications.

Pin	Function	Description
1	L+	Voltage supply: 18...30 VDC
2	Pulse output Q1 alternative: 1. Empty pipe output 2. Dosing output 3. Upper or Lower Limit output 4. Negative flow	Digital output Q1 Freely adjustable ranging from 0.1 to 3000 ml/pulse in 0.1 ml/pulse steps, npn-Transistor, max. load 30V/100mA. Max. Voltage must be less than the supply voltage Configurable output of 0V or 24V when pipe is empty. Configurable output of 0V or 24V Configurable output of 0V or 24V when reaching upper or lower limit Configurable output of 0V or 24V when liquid flows in negative direction.
3	GND	Ground: 0 V
4	Digital output Q2 Functions: 1. Empty pipe output 2. Dosing output 3. Pulse output 4. Upper or Lower Limit output 5. Negative flow	Digital output Q2 Configurable npn- or pnp-Transistor, max. Load 30V/ 100mA. Max. Voltage must be less than the supply voltage Configurable output of 0V or 24V when pipe is empty. Configurable output of 0V or 24V Freely adjustable ranging from 0.1 to 3000 ml/pulse in 0.1 ml/pulse steps. Configurable output of 0V or 24V when flow reaches upper or lower limit. Configurable output of 0V or 24V when liquid flows in negative direction.
5	Analog output QA	4....20mA; 0....20mA Example: 0l/min => 4mA 36l/min => 20mA Empty pipe Alert => 3.5mA (4-20mA, depending on the configured limits)
6	Communication	Communication interface
7	Digital input I1 1. Dosing output 2. Set offset 3. Reset counter 4. Creeping flow off	Digital input I1 Starts the dosage by a rising edge of 24V. The Offset is set by a rising edge of 24V. Reset of the counter by a rising edge of 24V. Creeping suppression is deactivated as long as there are 24V at the input.
8	Shielding	EMC safety

Attention: Only operate the flow meter Flowmax44i within the operating limits stipulated on the product label and the operating manual / data sheet. Use of the Flowmax 44i outside these conditions will lead to overloads which cause permanent damage.



IMPORTANT!

3. Commissioning

NOTE: If Flowmax 44i is used for a fluid other than water the "basic trim" has to be carried out during commissioning. Therefore the device has absolutely be filled with medium.

The basic trim can be done on the device display (alternatively FlowCon). During the adjustment the medium may not flow as it affects the function

NOTICE!

3.1 Operation

If Flowmax 44i is used as a volume flow meter for water or water-like liquids it will not require on-site calibration. Parameters for water are calibrated at the factory. The Flowmax 44i may also be ordered with customized settings, but customized settings must be requested when Flowmax 44i is ordered.

If necessary, e.g. if viscosity and/or speed of sound deviate significantly from water, the pre-set parameters can be adjusted via the display or FlowCon. It is always necessary to adjust the manufacturer pre-set parameters when using the Flowmax 44i as a dosing device according to section 3.2 (Dosing 1. Flowmax 44i as a dosing device). Adjusting the manufacturer pre-set parameters requires a display or FlowCon.

NOTICE!

The following parameters may be changed to settings suitable for the individual conditions: for 5-pin version

- Digital output Q1, function and behavior
- Analog output QA, function and behavior
- Flow range, for which shall apply 4...20 mA
- Pulse value
- Creeping suppression
- Optimization of measurement curve with up to 8 interpolation values (medium matrix)

The following parameters may be changed to settings suitable for the individual conditions: for 8-pin version

- Digital output Q1, function and behavior
- Digital output Q2, function and behavior
- Digital input I1, function and behavior
- Analog output QA, function and behavior
- Flow range, for which shall apply 4...20 mA
- Pulse value
- Creeping suppression
- Optimization of measurement curve with up to 8 interpolation values (medium matrix)

Display and user menu

Flowmax 44i is equipped with a display to visualize actual measurement values and to change parameters of the flow meter. Menu navigation and parameter changes are controlled by the four keys on the keypad.

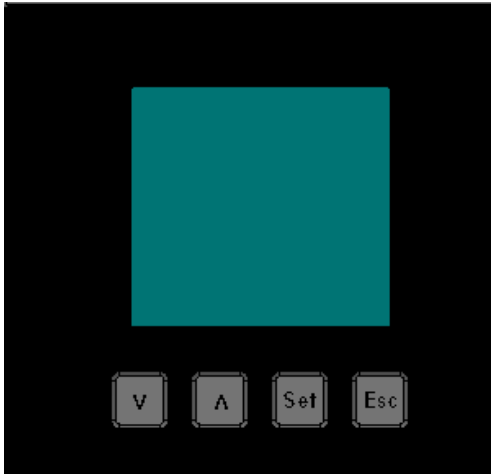


Fig. 9: Operating with the key pad

Press the “Set” key to display the main menu. Different menu options can be selected by using the two arrow keys.

To enter e.g. analog limits “Analog output – Upper limit” use the arrow keys to change values and press “Set” to confirm. To switch back to the last menu level press the “Esc” key. As soon as the operator tries to change values the user will be prompted to enter a password. Password protection is used to ensure changes to values or configurations are done by authorized personnel. The default password for Flowmax 44i is **41414**. The password can be changed with FlowCon. The user level will remain active for 5 minutes after the last press on any button. Examples of operation see appendix.

The Password should only be shared with personnel authorized to make changes to setting.

Note:

Always the first parameter of the menu appears in the display. This need not be the adjusted enabled parameter. The enabled parameter appears inverted and is possibly visible by scrolling.

Note:

Functions marked with asterisk (*) are only available for the Flowmax 8-pin version. Flowmax 44i without user display supports the same functions as the display-version. The display and programming unit FlowCon 200i is needed to change configurations of Flowmax 44i without user display.



IMPORTANT!

NOTICE!

NOTICE!

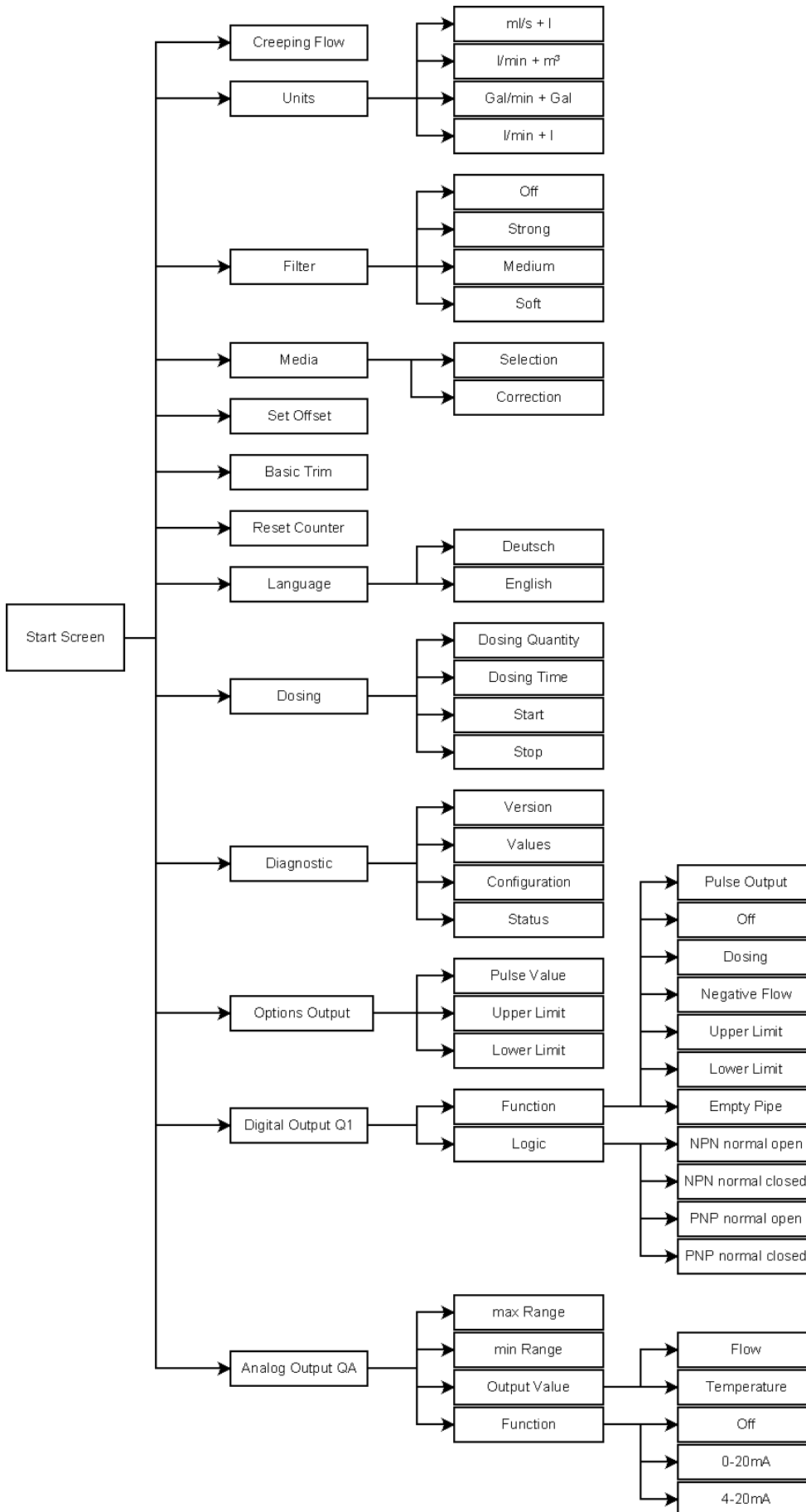


Fig. 10: Menu organization for 5-pin version

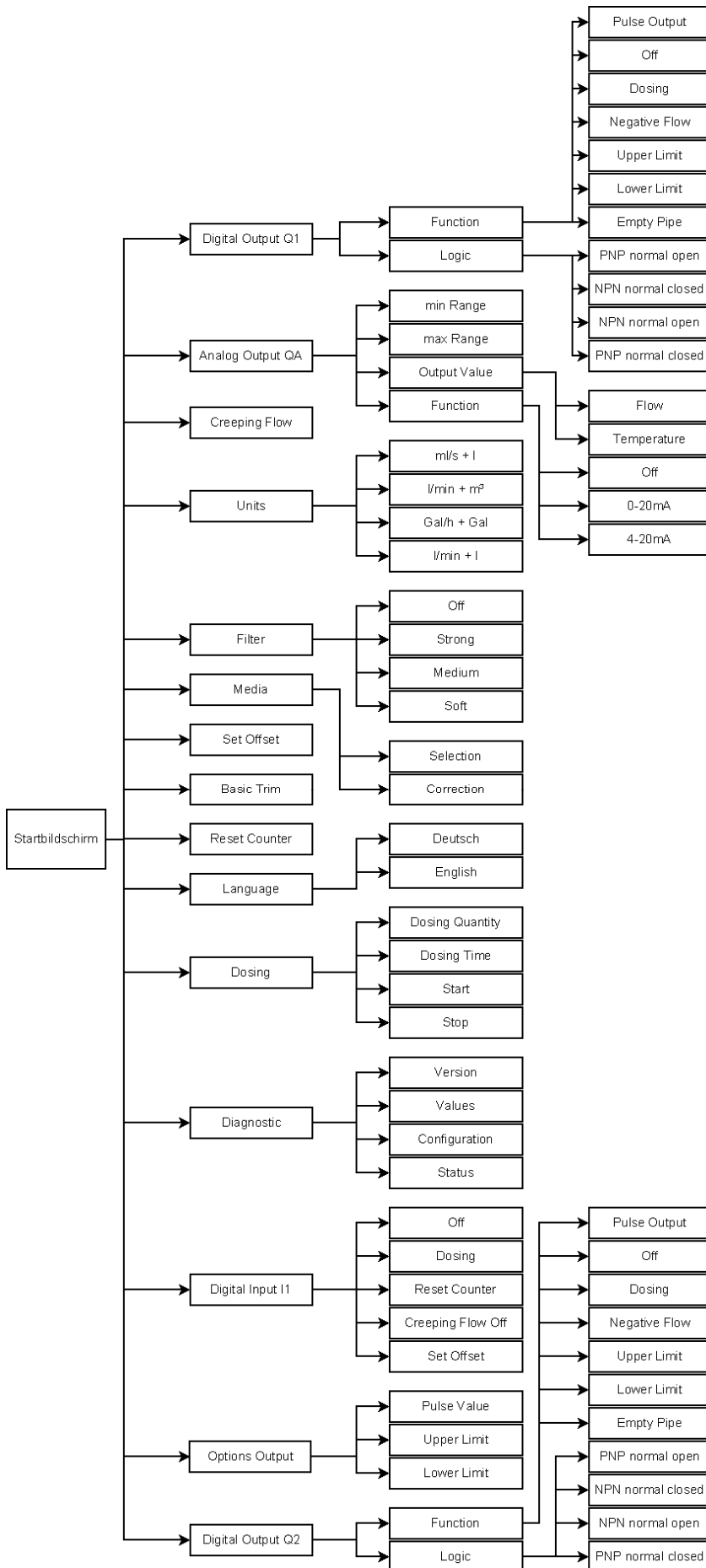


Fig. 11: Menu organization for 8-pin version

3.2 Functionalities of flow meter and default settings

Set Offset

In the sub menu “Set Offset” it is possible to set the actual offset of the flow meter. Use this function only when Flowmax 44i is completely filled with liquid, and there is no flow. If the offset is set while flow is present or when the pipe is empty it will cause an offset drift what results in a faulty measurement. Example of operation see appendix.

A small offset change, e.g. caused by variable temperatures, is automatically done by the flow meter. It is also possible to set the offset via the configurable digital inputs.

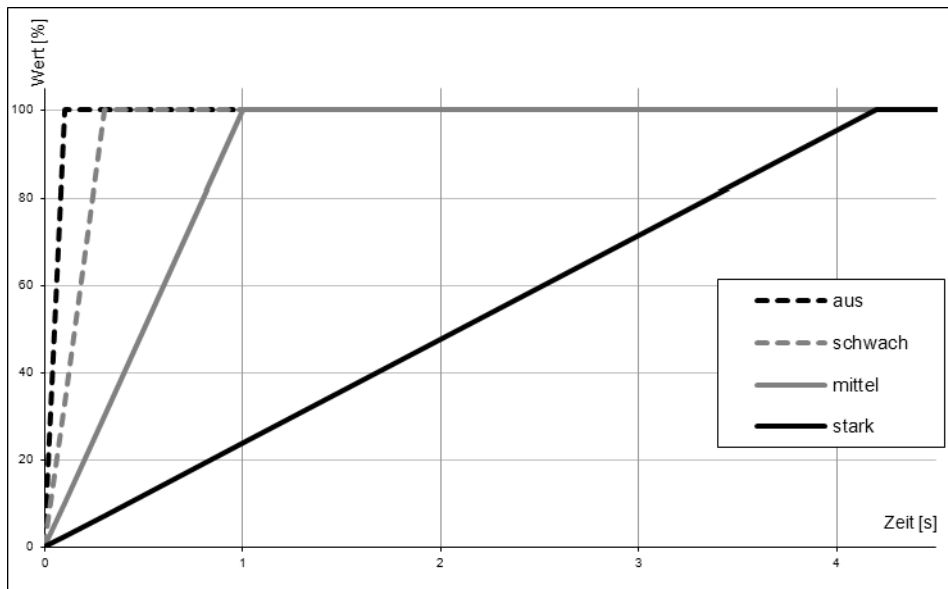
Language

The language of the display can be changed. Available languages are English and German.

Filter

The function ”Filter“ averages the analog output signal. Possible settings: Soft, Medium, Strong, Off

The analog output signal reacts faster to signal changes when average determination is set to “soft”. Whereas the analog output signal reacts slower when average determination is set to “strong”.



Filter	100%
off	16ms
soft	0,3s
medium	1s
strong	4,2s

Units

Flowmax 44i is able to show actual flow or the volume in different units. Following units can be selected:
ml/s + l , Gal/min +Gal , l/min + l , l/min + m³.

The first letters correspond to the unit of the flow value. The letters after the + correspond to the unit of the volume value.

Reset Counter

The volume counter of Flowmax 44i can be reset. Note, once reset, counter values cannot be restored. After a reset the counter works normally. Example of operation see appendix.

Important!

Once reset, counter values cannot be restored. After a reset the counter works normally.

Basic Trim

The “Basic Trim” function insures that the flow meter is conforming to the media specific characteristics. To execute this function, Flowmax 44i runs a self-diagnostic function which optimizes all important parameters. This process lasts approximately 1 minute.

Important!

To make sure the basic trim is correctly done, the flow meter has to be filled with liquid without a flow.

When there is an error detected while performing the basic trim function, the display shows “Error”. After successfully finishing the basic trim function, the display will show “Done”.



IMPORTANT!

NOTICE!



IMPORTANT!

Creeping suppression

The creeping suppression excludes flow measurements that result from convection in a narrow band around zero, even with a closed valve. At the factory, the creeping suppression is set at a standard value in relation to the cross-section of the flow meter. Changes to a smaller value of the parameter may cause an offset drift what results in a faulty measurement.

There are higher tolerances below the standard default settings, see also section 5.2 measurement errors!

Setting range:	0.0...20 l/min, in 0.006 l/min steps
Default settings:	0.3 l/min for DN10
	0.9 l/min for DN15
	3.5 l/min for DN20
	5.0 l/min for DN25

The creeping suppression works with a hysteresis of - 25%.

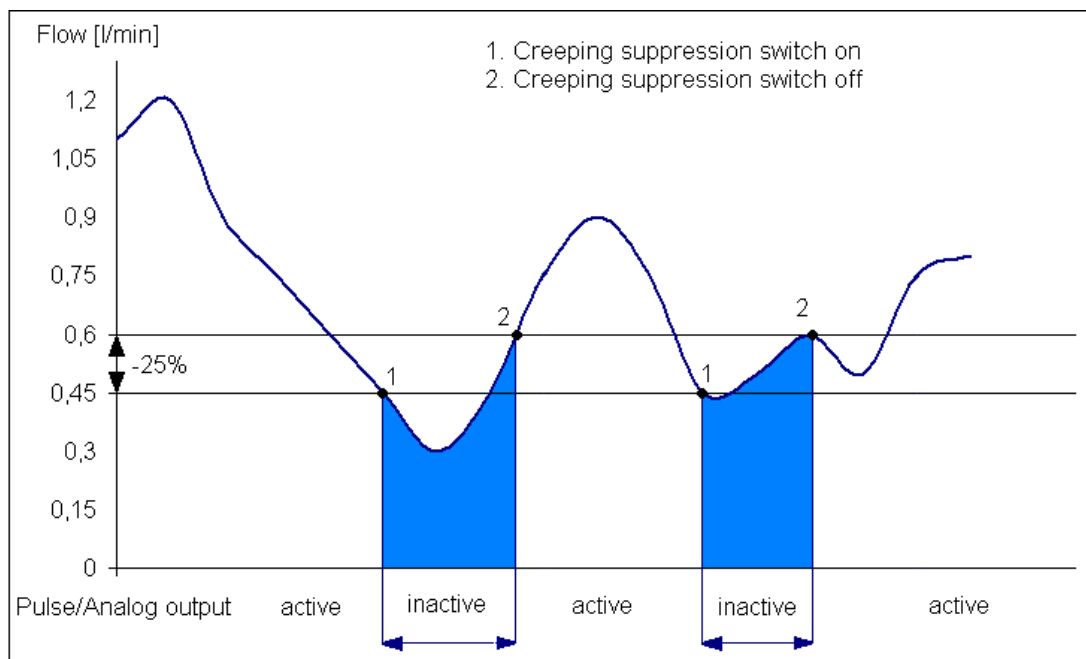


Fig. 12: Function of the creeping suppression illustrated with 0.6 l/min

Example: Creeping suppression = 0.6 l/min

If the flow rate is lower than 0.45 l/min the pulse output/analog output becomes inactive. If the flow rate exceeds 0.6 l/min a pulse is output again and added to the totalizer. Similarly, a value is transmitted to the analog output again.

Diagnostic

The sub menu "Diagnostic" shows the software/hardware version and other helpful values for analysis. Actual values and the instrument's present status are important to analyze the measurement or failure by the manufacturer service.

NOTICE!

Analog output QA

The analog output is available as current output 4-20mA or 0-20mA. This is selected with the purchase order. As a standard it comes with current output 4-20mA. It can also be switched off by using the device menu or FlowCon.

The current output ranges from 0 to 22.6mA measuring the flow rate or the condition of the flow measurement.

The values here signify for 4-20mA configuration:

- 20 mA the upper limit of the relevant measurement
- 4 mA the lower limit of the relevant measurement
- 3.5 mA empty pipe

Upper and lower limit parameters can be set within the type-specific measurement of the device. By default, zero flow is set at 4 mA and the maximum flow is set at 20 mA.

Set point ranges: 0-20mA, 4-20mA, off
 Output value: Flow, Temperature

When current output is used, the load must not be higher than 500Ohm. A higher load prevents the device from providing the maximum current of 22.6mA.

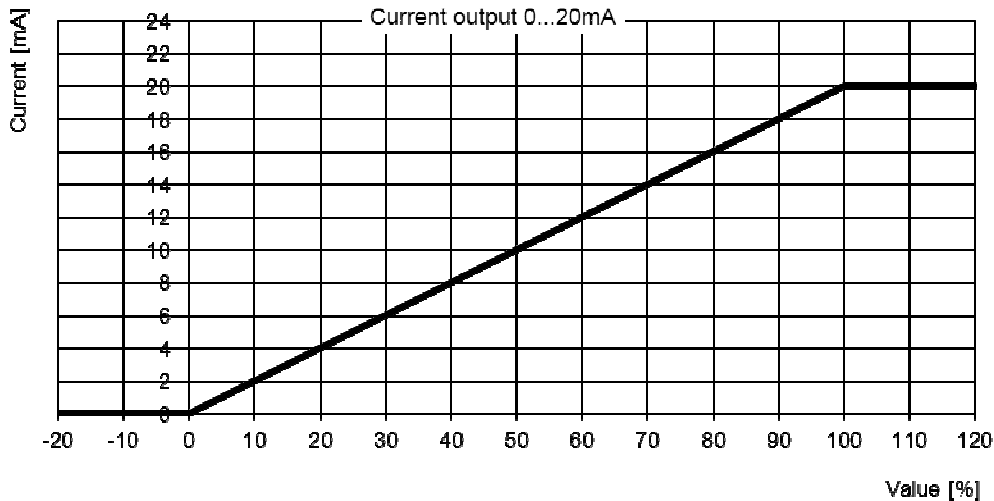
Characteristic curves analog output



IMPORTANT!

0 - 20mA

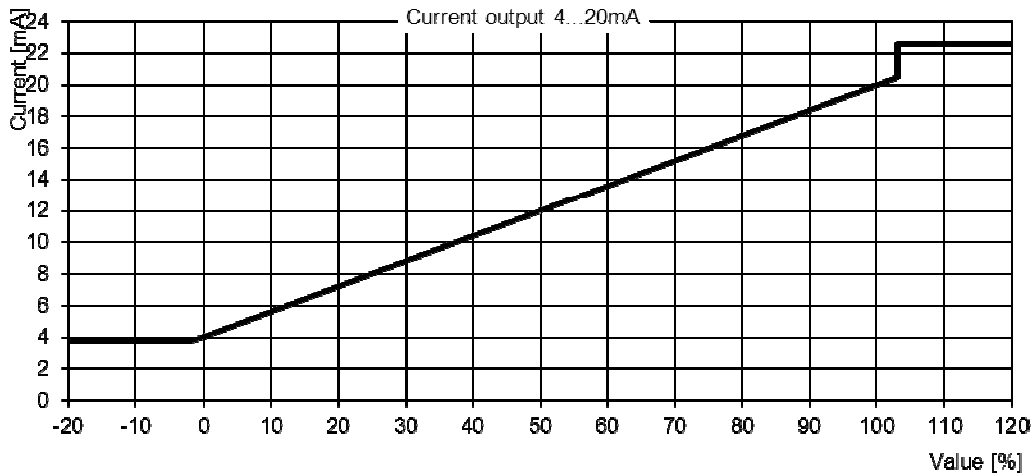
For the following graphic “min Range” is used for 0% and “max Range” is used for 100%.



Value	Current [mA]
Smaller 0%	0
0% (min Range)	0
Between 0% and 100%	Linear interpolation from 0 to 20 mA
100% (max Range)	20
Bigger 100%	20

4 - 20mA

For the following graphic “min Range” is used for 0% and “max Range” is used for 100%.



Value	Current [mA]
Empty pipe	3.5
Smaller -1.2%	3.8
Between -1.2% and 0%	Linear interpolation from 3.8 to 4mA
0% (min Range)	4
Between 0% and 100%	Linear interpolation from 4 to 20mA
100% (max Range)	20
Between 100% and 103%	Linear interpolation from 20 to 20.5mA
Bigger 103%	22.6

Pulse value

The pulse value determines the flow volumes for which an output pulse will be emitted.

Choose a configuration which will neither exceed the maximum output frequency of the Flowmax 44i (10kHz) nor the maximum input frequency of the control. If the maximum frequency is exceeded the Flowmax 44i will not output pulses correctly.

Example: 2.0 ml/Pulse

This means: a pulse is emitted every 2.0 ml.
 Setting range: 0.1...3000.0 ml/Pulse, in 0.1 ml/Pulse steps
 Default setting: 1.0 ml/Pulse

Flow ml/s	Pulse value ml/Pulse	Frequency Hz	Period s	Duration of the pulse	
				s	ms
1	1	1	1	0,5	500
100	1	100	0,01	0,005	5
1000	0,1	10000	0,0001	0,00005	0,05
100	10	10	0,1	0,05	50
0,5	10	0,05	20	1	1000

In the last case every 20 seconds, a pulse of 1 second duration is put out.

Dosing

The Flowmax 44i can be configured for manually dosing by choosing the dosing function via the user display. The Volume “Dosing Batch” and the “Dosing Time” are freely adjustable. When the “Dosing Time” is set to zero, the timer control is inactive. A dosage can be started and stopped with the menu function keys “Start” and “Stop”.

Setting range “Dosing Batch”: 0 – 3500 Liters
 Setting range “Dosing Time” 0 –30000 Seconds
 Default setting “Dosing Batch”: 0 Liters
 Default setting “Dosing Time”: 3 Seconds

Important!

If Dosing Time =0 the time switch-off is inactive.



IMPORTANT!

Digital outputs

All outputs switch over to high resistance when the supply is smaller than 18V. When overload or short circuit is detected the digital outputs are switched off after 100µs for a period of 2s. When time is up the outputs get applied again.

Empty pipe output

	Empty pipe	Filled, no flow
0V normal closed	High resistant	0V
0V normal open	0V	High resistant
24V normal closed	High resistant	24V
24V normal open	24V	High resistant

Pulse output

	Empty pipe	Filled, no flow	Filled, flow
0V normal closed	0V	0V	0V Pulses
0V normal open	0V	0V	0V Pulses
24V normal closed	High resistance	High resistance	24V Pulses
24V normal open	High resistance	High resistance	24V Pulses

Upper limit output

	Below lower limit	Between the limits	Above upper limit
0V normal closed	High resistance	High resistance	0V
0V normal open	0V	0V	High resistance
24V normal closed	High resistance	High resistance	24V
24V normal open	24V	24V	High resistance

Lower limit output

	Below lower limit	Between the limits	Above upper limit
0V normal closed	0V	High resistance	High resistance
0V normal open	High resistance	0V	0V
24V normal closed	24V	High resistance	High resistance
24V normal open	High resistance	24V	24V

Dosing output

	Startup of device	While dosing	Before/after dosing
0V normal closed	High resistance	High resistance	0V
0V normal open	High resistance	0V	High resistance
24V normal closed	High resistance	High resistance	24V
24V normal open	High resistance	24V	High resistance

Important!

When using the dosing function the output should not be configured as normal closed!

If the dosing output is configured as normal closed the valve will stay open after the dosing batch.



IMPORTANT!

Digital output Q1

Digital output Q1 may be used as pulse output, empty pipe detection, for switching dosing valve or limit control. By using the Display or FlowCon the user can switch between npn and pnp-transistor logic. In case of inductive load a diode has to be connected antiparallel to the coil.

Example 1: Flowmax 44i via npn, external relay

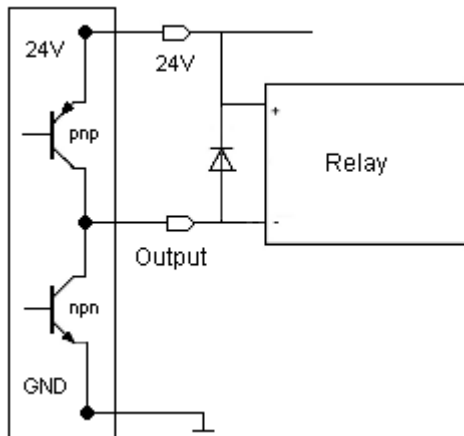


Fig. 13: Connecting Output Q1 to relay

Setting area: off, pulse output, empty pipe, dosing output, lower limit, upper limit, negative flow

Digital output Q2 *

Digital output Q2 may be used as pulse output, empty pipe detection, for switching dosing valve, limit control or flow direction control. See chapter 2.3 table connection plug 8-pins.

The npn or pnp logic can be selected. When the output is connected to an inductive load a diode has to be installed parallel to the load.

Example 2: Flowmax 44i via pnp, external counter e.g. PLC

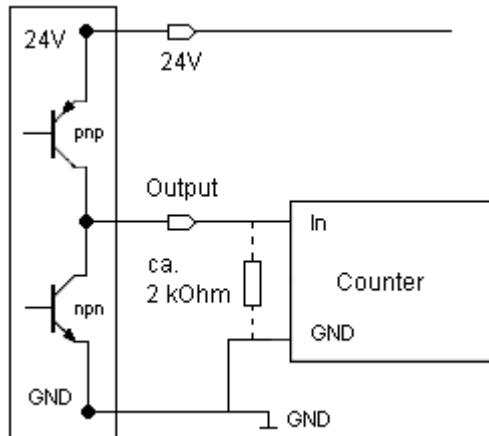


Fig. 14: Connecting output Q2 to counter

Setting area: off, pulse output, empty pipe, dosing output, lower limit, upper limit, negative flow

Important!

Inductive load on the digital outputs without an installed diode may cause damage on the Flowmax 44i electronics.



IMPORTANT!

Dosing function

Dosing controlled in different ways:

1. Flowmax 44i as dosing device (dosing control via Flowmax 44i)

Flowmax 44i controls the complete dosing function. The dosing quantity (e.g. 400 ml) is pre-set in the Flowmax 44i via the display or FlowCon. Dosing starts, as soon as the digital input is wired to 24V, e.g. via a pushbutton. Flowmax 44i will open the dosing valve via the output configured for it. When the pre-set dosing quantity is released, the dosing valve is closed via the above output. The dosing procedure can also be started and stopped by using the dosing user menu. The second output can be used independently for signaling empty pipe, limit control or flow direction.

2. Flowmax 44i as flow meter (dosing control via dosing equipment)

The dosing equipment controls the entire dosing function. The dosing quantity is fixed in the dosing equipment control during commissioning by pre-selecting the meter pulses. Dosing starts, when the relevant pushbutton of the dosing equipment is pushed. The control will open the dosing valve. Once the button is pushed Flowmax 44i will send a voltage pulse to release the metered volume (e.g. per 1ml). Once the pre-selected metered volume is released, the control closes the dosing valve. In this case, output 1 is used to send out pulses.

The customer has to provide an emergency stop and an overfilling stop to prevent hazardous situations. Both functions must perform safety shut down of pumps and closing of valves.



WARNING!

Media

Flowmax 44i comes with a medium matrix with up to 8 interpolation values. Different media can be managed in the sub menu “Media”. By using the sub menu point “Correction” it is possible to correct the flow measurement in percent. Example of operation see appendix.

Digital input I1 *

Flowmax 44i has a digital input that is programmable for the following functions: dosing input, set offset, creeping suppression inactive and reset counter. In order to start a dosing process, 24V DC power is required. The status of the dosing parameters or modifications can be done via user display or FlowCon.


The dosing input is locked so that a re-start is not possible during a running dosing process. After changing configurations via Display or FlowCon a restart of the device is necessary to activate the dosing input function.

NOTICE!

When input setting is changed a device restart is required. After restart the changes are activated.

Available input functions:

	Set offset	Creeping flow off	Dosing	Reset counter	off
0V	-	-	-	-	-
24V	Rising edge: 0->24V Set offset	State: deactivating creeping flow	Rising edge: 0->24V start dosing	Rising edge: 0->24V counter is reset	-

 run only in stationary medium

The input function “Set Offset“ may only be used when there is no flow through the meter. If an offset trim is done while liquid flow is present an offset drift will cause measurement deviations. If the Flowmax shows an offset drift caused by a wrong offset setting, run the function “Set Offset” or “Basic Trim” again with filled flow meter and no present flow.

3.3 Overview of default settings

Function	Default settings
Digital output Q1	Pulse output as 24V normal open
Digital output Q2 *	Empty pipe output as 24V normal open
Digital input I1 *	No function assigned
Current output QA	Flow as 4-20mA signal 20mA -> 21 l/min at DN10 36 l/min at DN15 60 l/min at DN20 240 l/min at DN25
Pulse value	1 ml/Pulse
Creeping suppression	0.3 l/min at DN10 0.9 l/min at DN15 3.5 l/min at DN20 5.0 l/min at DN25

3.4 General Information

Please check the following before powering the flow meter for the first time:

- Check the electrical connections and cable allocations.
- Check the installation position of the flow meter. Is the direction of the arrow on the housing/name plate and the actual flow direction in the pipe congruent?
- Is the measurement pipe completely filled with fluid?
- Check the back pressure in the system.



IMPORTANT!

When everything has been checked, switch on power. After 30 minutes with power running the measuring device reaches the maximum accuracy.

Now, Flowmax 44i is operational!

4. Exchange of flow meter

- **Switch off power before disconnecting the electrical connections!**
 - **Wiring installation, disassembly and removal must be performed by qualified persons experienced and knowledgeable about electrical work.**
 - **Serious injury or death from electric shock may occur if wiring, installation, disassembly or remove of wires is performed while electrical power is energized**
- Please note that after replacing the flow meter
- a) Specific programming of the previous flow meter should be noted and programmed to the new flow meter
 - b) when using the dosing function, set a quantity



WARNING!

If the device requires a configuration change, the display and programming unit FlowCon 200i may be required (see section 6. Accessories).

Repair, hazardous substances

Before sending the flow meter Flowmax 44i for repair, the following precautions must be taken:

- **Clean all process chemicals from the device. Fully rinse the flow path. Please pay close attention to the process fittings. All media must be removed before returning. This is particularly important, if the medium to be measured is health hazardous.**



WARNING!

Devices judged to be insufficiently cleaned will be returned to sender. No inspection of device will be done until proper cleaning is completed by user.

Costs due to inadequate cleaning of the instrument for possible disposal or injury (burns, etc.) will be charged to the sender of the meter into account.

- **With the flow meter send a detailed report describing the failure, the application and the physical-chemical properties of the medium parameters. (e.g. a decontamination declaration).**

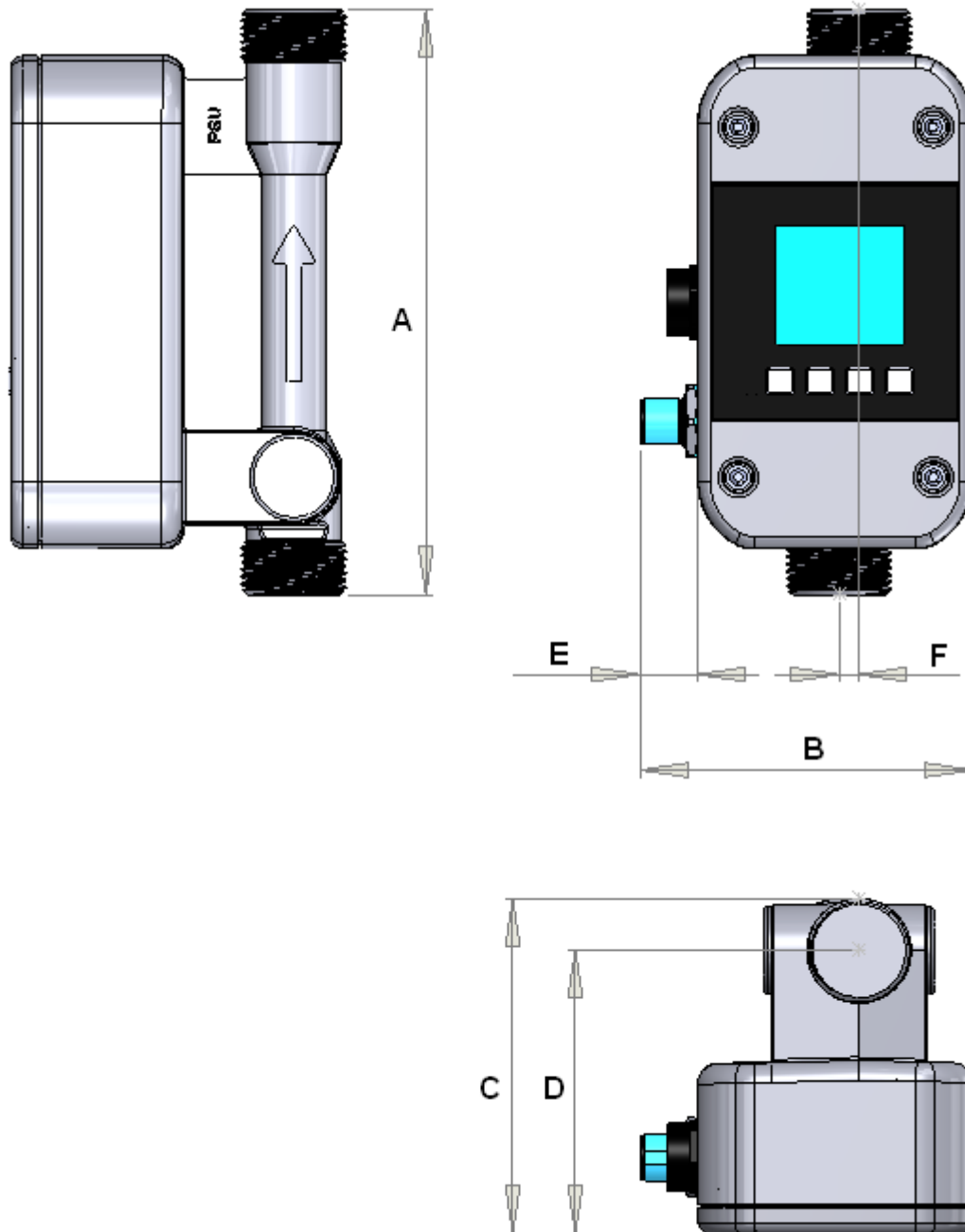


WARNING!

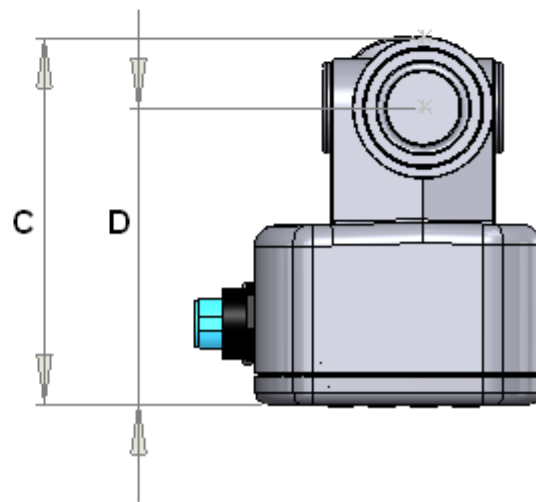
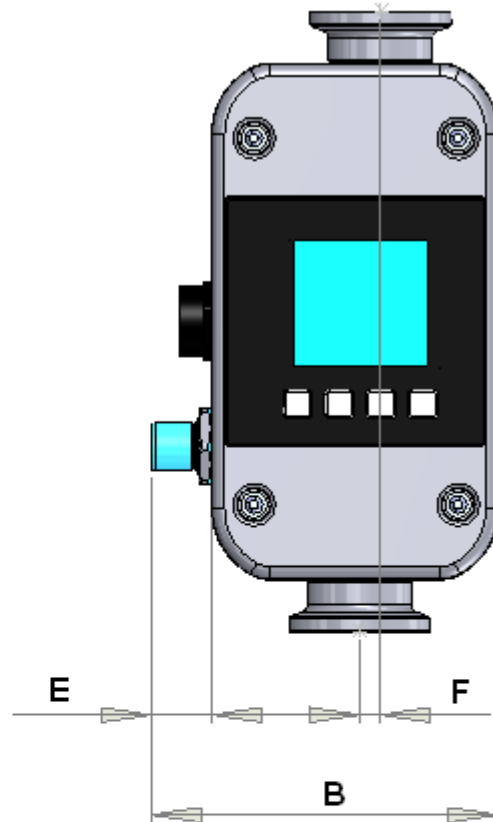
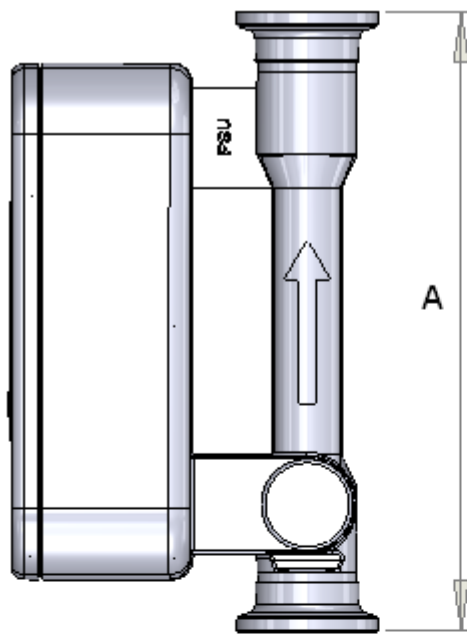
In order to be able to process your repair order quickly and smoothly it is important that you provide a technical contact person including phone and fax number as well as e-mail address.

5. Technical specifications

5.1 Dimensions and weight



Nominal diameter	Connection	Lengths A [mm]	Widths B [mm]	Height C [mm]	Height axis D [mm]	Plug E [mm]	Parting line F [mm]	Weight [g]
DN10 3/8"	1/2 G,NPT	147,0	84,0	83,0	70,5	15,0	5,0	332
DN15 1/2"	3/4 G,NPT	147,0	84,0	84,5	71,1	15,0	5,0	344
DN20 3/4"	1 G,NPT	160,0	84,0	94,2	77,6	15,0	5,0	414
DN25 1"	1 1/4 G,NPT	168,0	84,0	98,5	77,6	15,0	5,0	454



Nominal diameter	Connection	Lengths A [mm]	Widths B [mm]	Height C [mm]	Height axis D [mm]	Plug E [mm]	Parting line F [mm]	Weight [g]
DN10 3/8"	11864-Clamp	147,0	84,0	83,0	70,5	15,0	5,0	339
DN15 1/2"	11864-Clamp	147,0	84,0	84,5	71,1	15,0	5,0	347
DN20 3/4"	11864-Clamp	160,0	84,0	94,2	77,6	15,0	5,0	429
DN25 1"	11864-Clamp	168,0	84,0	98,5	77,6	15,0	5,0	469

5.2 Technical specifications

Housing

Nominal diameters	DN10 - 3/8", DN15 - 1/2", DN20- 3/4", DN25 - 1"
Connection	inch thread G, inch thread NPT, clamp connection DIN11864-3 BKS-Clamp Form A
Medium temperature	0...+80°C
Protection class	IP 67
Pressure nominal	16 Bar / 232Psi for DN10 – 3/8" and DN15 – 1/2" 10 Bar / 145Psi for DN20 – 3/4" and DN25 – 1"
Material	all parts in contact with medium made of PPSU (Polyphenylsulfone) Electronics housing made of PPSU (Polyphenylsulfone)

Electronics

Power supply	18...30V DC
Power input	at 24V DC = 3.6W
Connection	Plug 5 pins, option plug 8 pins
Ambient temperature	0...+60°C
Storage temperature	0...+70°C
Current output	0/4...20 mA Lower- and upper limit adjustable, Ground connected to supply ground Error Signal according to NAMUR NE43
Digital output O1 /2	via transistor npn- and pnp-logic max. 30V/100mA output voltage according to DIN 19240: ≤5V means LOW ≥12V means HIGH Short cut resistant Frequency 0...10kHz
Data interface	Data interface for parameterize
Measuring deviation	± 2% of reading ± 3mm/s (± 6mm/s for DN10 – 3/8") Option: ± 1% of reading ± 3mm/s (± 6mm/s for DN10 – 3/8") Reference conditions (VDE/VDI 2642)
Measuring range	0.3 – 21 l/min for DN10 – 3/8" 0.9 – 36 l/min for DN15 – 1/2" 3.5 – 60 l/min for DN20 – 3/4" 5.0 – 240 l/min for DN25 – 1"
Repeatability	0.5%

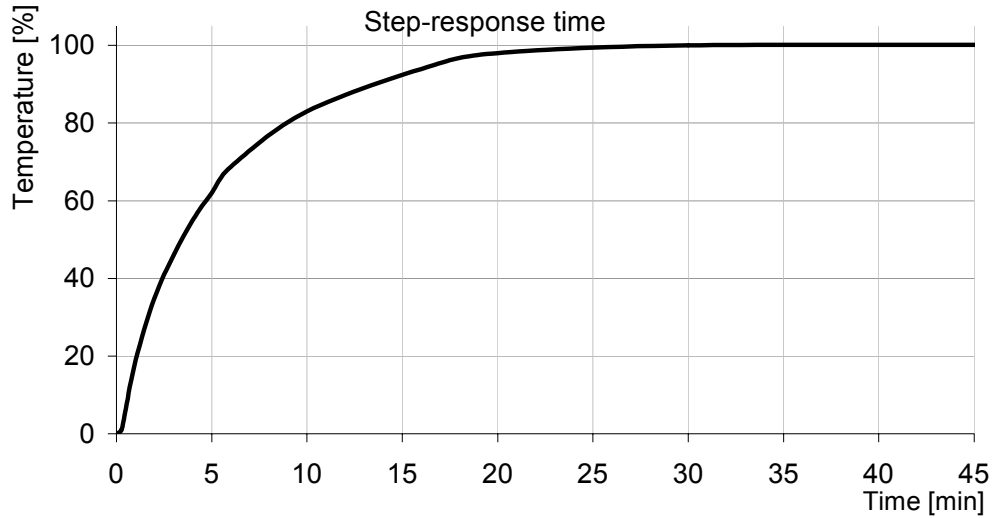
The measuring system Flowmax 44i meets the general EMC immunity requirements according to CE, EN 61000-6-3, EN 61000-4-2, EN 61000-4-3, EN 61000-4-4, EN 61000-4-5, EN 61000-4-6. It is in conformity with the requirements of the EC directives and has the CE label.

Behavior of the temperature sensor

The integrated temperature sensor has no direct contact to the liquid and is used to calculate the expansion of the housing. The environment temperature greatly influences the actual temperature of the temperature sensor. The response time of temperature changes relates to the mounting position of the temperature sensor inside the housing.

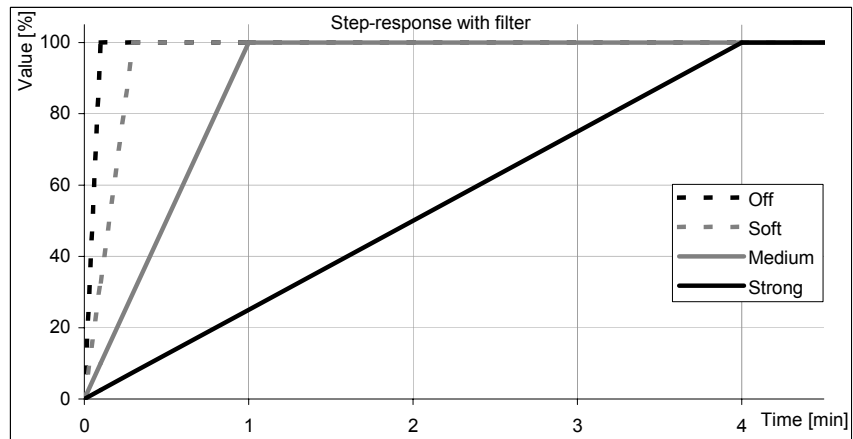
Step-response time

Step-response time after a significant temperature change. (Filter „Off“)



Filter configurations for temperature sensor

Filter	100%
Off	1s
Soft	16s
Medium	1min
Strong	4min



Influence of the environment temperature

In the table below some examples of the temperature influence are shown.

Liquid temp.	x	0.7	+	Environment temp.	x	0.3	=	Measured temp.
°C				°C				°C
40	x	0.7	+	20	x	0.3	=	34
40	x	0.7	+	30	x	0.3	=	37
40	x	0.7	+	40	x	0.3	=	40
60	x	0.7	+	20	x	0.3	=	48

In case of an error:

In case of a short circuit of the temperature sensor -50°C are shown.

In case of a cable brake between temperature sensor and electronic -30°C are shown.

Possible error text Flowmax 44i*

Display text	Description	Behavior
Empty Pipe	When "Empty Pipe" is detected, no flow measurement.	Display flashing + text
Low Voltage	When power supply is less than 18V the outputs are inactive.	Display flashing + text
Short Circuit	When over load of the digital outputs is detected (>100mA), outputs are inactive.	Only text
Lower Limit	When the flow is less than an adjustable limit and the output is configured for limit control.	Only text
Upper Limit	When the flow is more than an adjustable limit and the output is configured for limit control.	Only text
Sonic Speed	Actual sonic speed out of specified value. Run basic trim!	Only text

6. Accessories**Flowmax connection socket**

Flowmax connection socket is used to power and connect Flowmax 44i to an external control unit.

Ordercode 507321 (Socket 5 pins)

Ordercode 800845 (Socket 8 pins)

FlowCon 200i

External display and programming unit for use in combination with ultrasonic flow measuring devices Flowmax. FlowCon 200i can also be installed as separate display for Flowmax.

Ordercode 908873

7. Shipment

For Flowmax 44i with inch thread a matching pair EPDM gaskets is included. The device Flowmax 44i is delivered without additional material like connection socket or cable. We recommend ordering a connection socket (e.g. Ordercode 507321) to supply the measuring device.

Appendix Examples of operation**Enter Password**

Key	Display picture
Set	Password
4 x A	40000
Set	X0000
A	X1000
Set	XX000
4 x A	XX400
Set	XXX00
A	XXX10
Set	XXXX0
4 x A	XXXX4
Set	

Reset Counter

Set	Set Offset Basic Trim Reset Counter Language Dosing
Set	Rest Counter Start?
Set	Reset Counter Start? Done

Set Offset

Use this function only when the device is completely filled with liquid, and there is no flow. If the offset is set while flow is present or when the pipe is empty it will cause an offset drift what results in a faulty measurement.

Set	Set Offset Basic Trim Reset Counter Language Dosing
2 x A	Filter Media Set Offset Basic Trim Mengenreset
Set	Set Offset Start?
Set	Set Offset Start? Done

1-point correction

With the 1-point correction, the meter is calibrated to an operating point. Given an arbitrary amount of volume is filled into a container and measured with a weight. Attention: subtract the weight of the container.

With inclusion of the density of the medium, the volume (volume = mass / density) is obtained. This has to be compared with the meter display.

Shows the meter for instance 2% more than determined by the scale a value of -02.0% must entered for the 1-point correction.

- Set
 - Set Offset
 - Basic Trim
 - Reset Counter**
 - Language
 - Dosing

- 3 x A
 - Units
 - Filter
 - Media**
 - Set Offset
 - Basic Trim

- Set
 - Media**
 - Water

- V
 - Media**
 - Correction

- Set
 - Media**
 - Correction**
 - 00.0%

Setting the sign
Setting the value

- Set
 - Media**
 - Correction**
 - Done

To enable the correction back to delivery, a correction of 00.0% is to be entered.

MIB GmbH
Messtechnik und Industrieberatung
Im Bürgerstock 7
D-79241 Ihringen
Tel. 0049 / (0)7668 / 90 98 9-0
Fax 0049 / (0)7668 / 90 98 9-99
E-Mail: zentrale@mib-gmbh.com
Internet: <http://www.flowmax.de/>