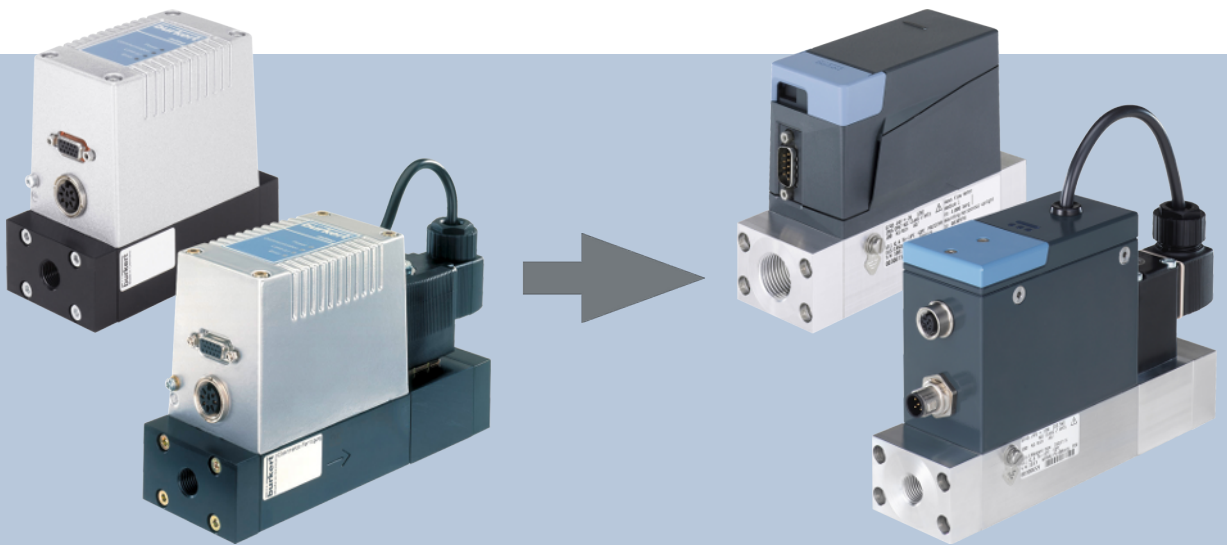


Type 8745

Substitute for 8006, 8626



Replacement Instructions

We reserve the right to make technical changes without notice.

© Bürkert Werke GmbH & Co. KG, 2023

Operating Instructions 2307/01 00574521 / Original DE

CONTENTS

1 About these instructions	4
1.1 New generations of MFM/MFC devices	4
1.2 Manufacturer	4
2 Electrical connection	5
2.1 Analogue/D-Sub adaptation	5
2.2 Analogue/M12 adaptation	6
2.3 PROFIBUS/M12 adaptation	6
3 Installation	7
3.1 Body with threaded connection: installation length	7
3.2 Body with threaded connection: mounting holes.....	7

1 ABOUT THESE INSTRUCTIONS

These instructions are supplemental to the operating instructions. The operating instructions for the device must be followed to ensure safe use of the device for its intended purpose.

DANGER!

Risk of injury due to incorrect use of the device

→ Please read the operating instructions thoroughly prior to using and operating the device.



Operating instructions and further product-related information at country.burkert.com > Type number (enter in search mask).

1.1 New generations of MFM/MFC devices

These instructions explain the exchange process for devices that are no longer available and their replacement with new, compact and technically up-to-date devices.

We are providing these instructions as a means to help integrate the new device into your existing system and enable a smooth and complication-free replacement process.

The new generations of devices from Bürkert can be parameterised and configured to the Bürkert Communicator software via the integrated bÜS interface.



The Bürkert Communicator software can be downloaded free of charge from country.burkert.com.

The USB-bÜS-Interface set is required to connect to the Bürkert Communicator.

Accessories	Order number
USB-bÜS interface set 1 (including power supply unit, bÜS stick with terminating resistor, Y-distributor, 0.7 m cable with M12 plug)	772426
USB-bÜS interface set 2 (including bÜS stick with terminating resistor, Y-distributor, 0.7 m cable with M12 plug)	772551

Tab. 1: Accessories

1.2 Manufacturer

Bürkert Fluid Control Systems

Christian-Bürkert-Str. 13–17

D-74653 Ingelfingen



The contact addresses are available at country.burkert.com in the menu "Contact".

2 ELECTRICAL CONNECTION

! DANGER!

Risk of injury from electric shock.

- Switch off the power supply before working on the device or system. Secure it against reactivation.
- Observe the applicable accident prevention and safety regulations for electrical devices.



If required, the device can be parameterised and configured using the Bürkert Communicator software via the büS interface.

2.1 Analogue/D-Sub adaptation

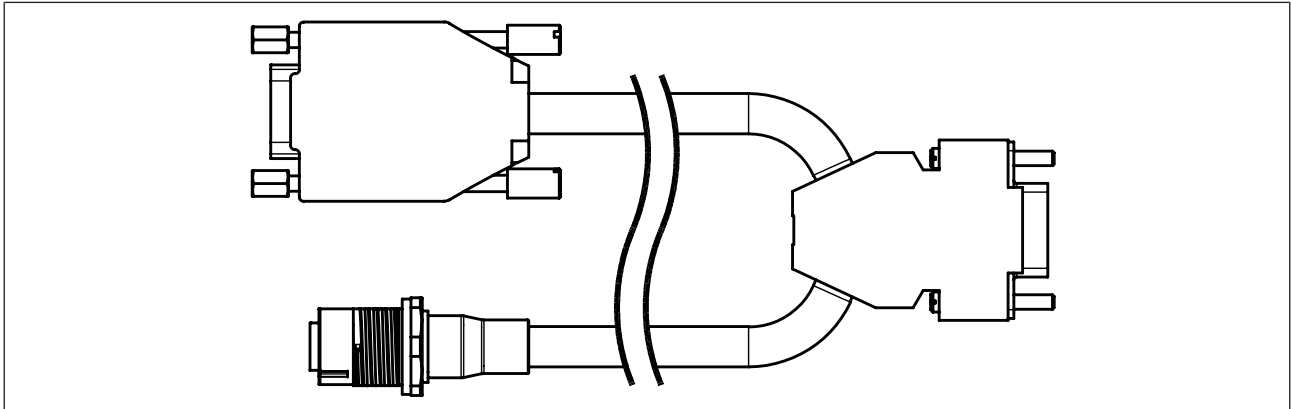


Fig. 1: Adapter cable included in delivery

- Disconnect available electrical connections from the device.
- Connect available electrical connections using the adapter cable.
- Connect the new device using the adapter cable.



Following device replacement, only 1 binary input and 1 binary output are available with the amended specifications.

2.2 Analogue/M12 adaptation

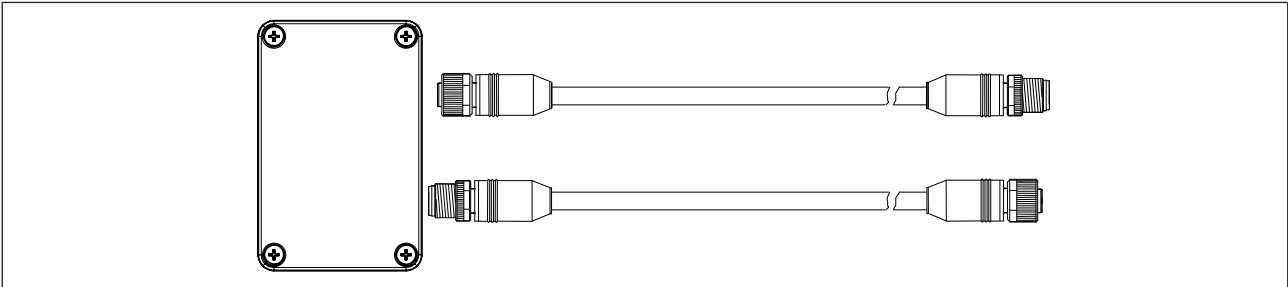


Fig. 2: Adapter kit included in delivery

- ➔ Disconnect the existing cables from the old device.
- ➔ Connect the existing cables to the adapter box.
- ➔ Connect the new device to the adapter box using the supplied adapter cables.



Following device replacement, only 1 binary input and 1 binary output are available with the amended specifications.

2.3 PROFIBUS/M12 adaptation

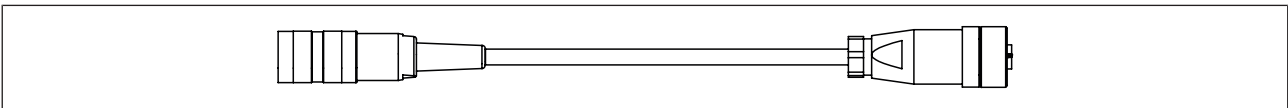


Fig. 3: Adapter cable included in delivery

- ➔ Disconnect the current device from the system, including connection cable.
- ➔ Connect the new device to the system using the adapter cable.



The new device has a different GSD file. The GSD file must be amended in the programmable logic controller.

- ➔ Download the GSD file at country.burkert.com > Type 8746 and update in the programmable logic controller.



The new device has no binary inputs or outputs.

Should the existing device be connected via a D-sub plug, an adapter from the D-sub to M12 is required (see specialist trade for PROFIBUS accessories).

3 INSTALLATION

3.1 Body with threaded connection: installation length

The devices have been adapted to be compatible with the installation length (± 1 mm).

3.2 Body with threaded connection: mounting holes

The hole pattern on the new devices has changed due to the more compact body. Mounting brackets are supplied to ensure continued use of the existing drill holes.

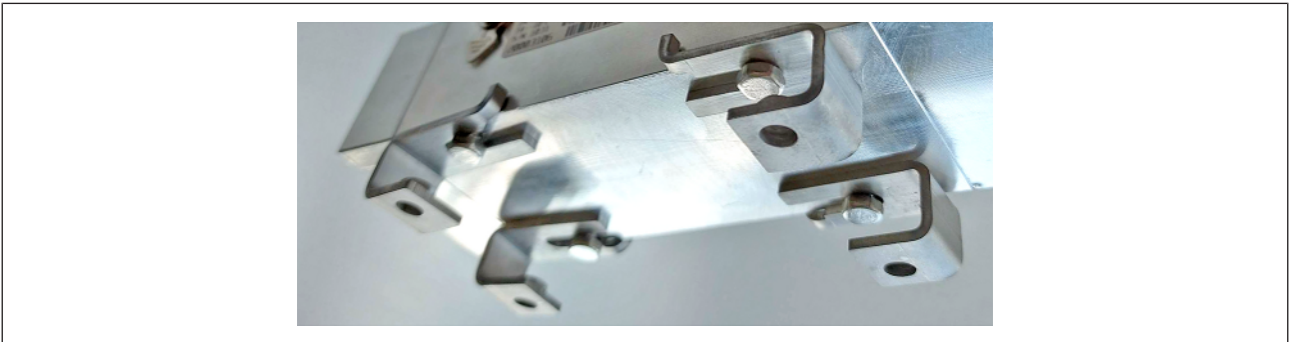


Fig. 4: Mounting brackets as adapters for existing mounting holes

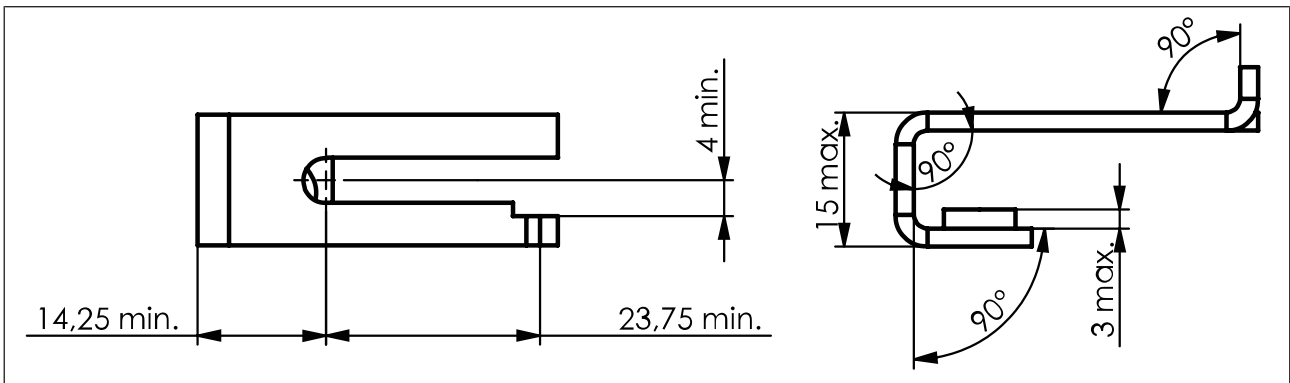


Fig. 5: Mounting bracket dimensions

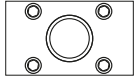
Delivery includes: 4 mounting brackets

- Screw in the mounting bracket beneath the new device.
- Adjust the position with the slotted holes to the existing holes.

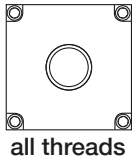
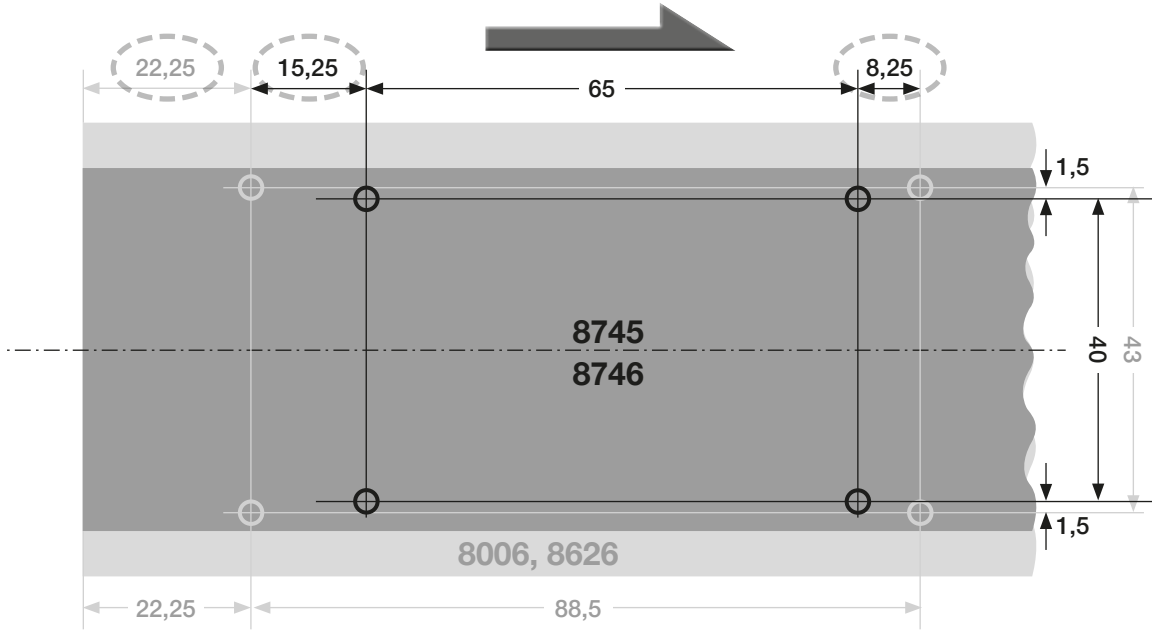
Please note: The device is mounted 15 mm higher using the mounting brackets.



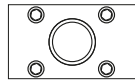
There is the option to set new mounting holes. Drilling templates/dimensions for this can be found on the last pages of these instructions.



only
G1/4 & NPT1/4
G3/8 & NPT3/8



all threads



only
G1/2 & NPT1/2
G3/4 & NPT3/4

