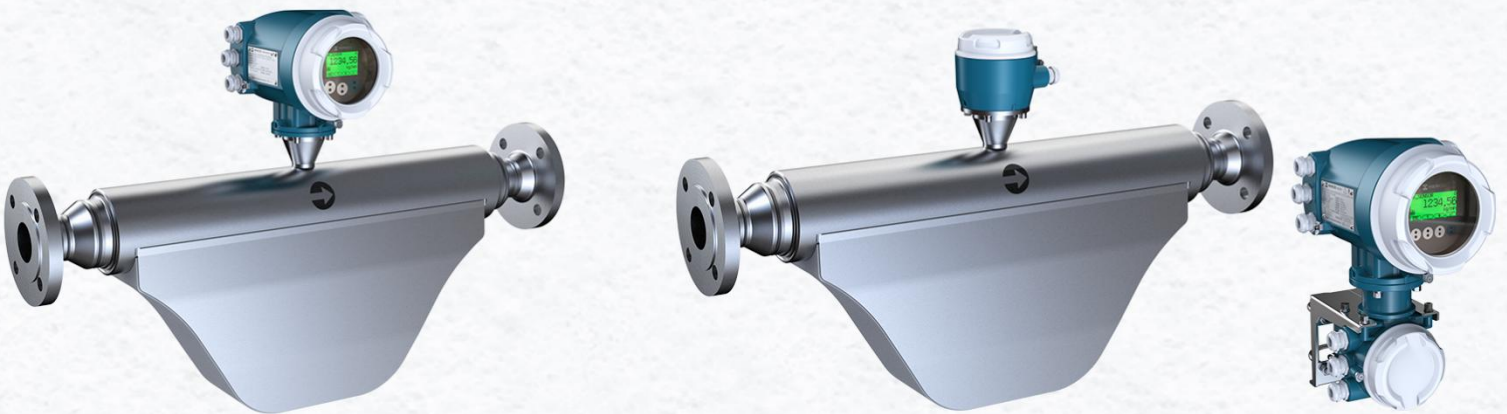




# HIKMICRO

## Coriolis Mass Flow Meter



## Features and Benefits

- ◆ 30:1 wide range ratio, accurate even at low flow rates
- ◆ Fully positive design for high precision – 0.1% for liquid and 0.5% for gas
- ◆ 8000 sampling points per second, fast response
- ◆  $\leq \pm 0.001$  g/cc High density accuracy with precision measurement circuit and advanced temperature compensation algorithm
- ◆ Good long-term stability with a large number of tests and failure verification under harsh conditions
- ◆ Intelligent self-diagnosis, including noise interference, wiring grounding, coil failure

# Contents

<b>1. Product Introduction</b> .....	<b>4</b>
1.1. Application .....	4
1.2. Measuring Principle .....	4
<b>2. Performance Characteristics</b> .....	<b>5</b>
2.1. Accuracy and Repeatability .....	5
2.1.1. Accuracy and Repeatability of Liquid Measurement .....	5
2.1.2. Accuracy and Repeatability of Gas Measurement .....	6
2.2. Relationship between Range Ratio, Accuracy and Pressure Drop .....	7
2.3. Liquid Flow and Zero Point Stability under Different Calibers .....	8
2.4. Temperature Indicators and Temperature Influence .....	8
2.4.1. Medium and Ambient Temperature .....	8
2.4.2. Ambient Temperature Influence .....	9
2.5. Pressure Levels and Pressure Influence .....	10
2.6. Vibration Limitation .....	10
<b>3. Specification Overview</b> .....	<b>11</b>
<b>4. Mechanical Construction</b> .....	<b>12</b>
4.1. Material .....	12
4.2. Weight .....	12
4.3. Dimension .....	13
4.3.1. Integral Mount .....	13
4.3.2. Remote Mount .....	14
<b>5. Ordering Information</b> .....	<b>16</b>
5.1. Model Code Description .....	16
5.2. Selection Table .....	20

# 1. Product Introduction

## 1.1. Application

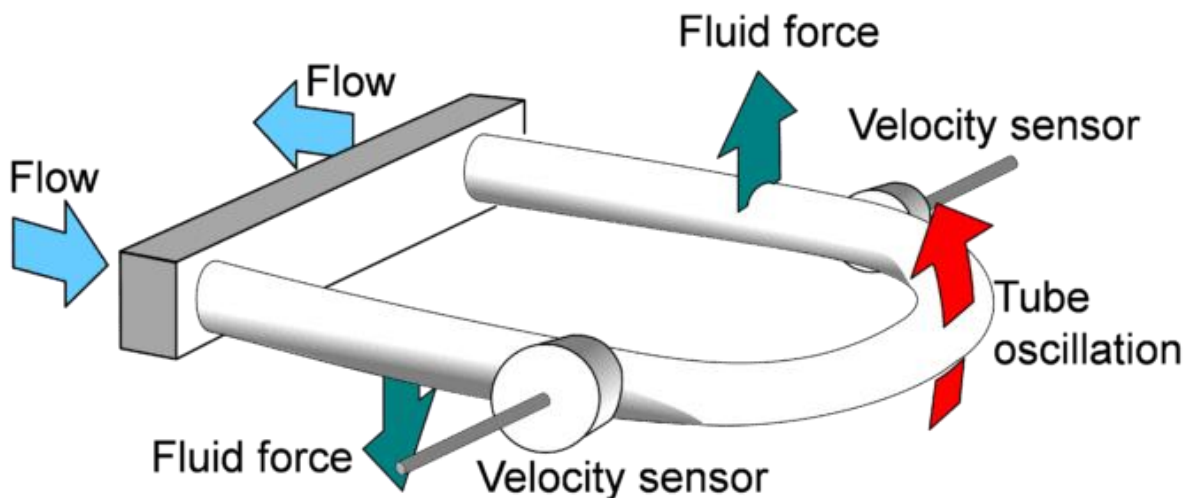
HIKMICRO FC00 series Coriolis mass flow meter consists of two parts: sensor and transmitter. This product can directly measure mass flow, volume flow, density, temperature and infer process parameters online, and is not affected by the physical properties of the measured fluid (such as temperature, pressure, viscosity, density). It has the characteristics of high measurement accuracy, high reliability, good stability and long service life, and is widely used in metallurgy, petrochemical, energy, water management, life sciences, medicine, food and beverage.

## 1.2. Measuring Principle

FC00 series Coriolis mass flow meter is based on the Coriolis force principle. The fluid flows through the measuring tube, causing the measuring tube to vibrate, thereby inducing the Coriolis Effect. The sensor calculates the mass flow and density of the fluid by measuring the changes in the frequency, phase difference and amplitude of the measuring tube.

The vibration frequency of the mass flow meter measuring tube changes with the change of medium density. By measuring the change of the resonance frequency of the measuring tube, the density of the medium can be obtained.

The mass flow meter sensor has a temperature sensor inside, which can directly measure and output the temperature of the medium. At the same time, the temperature can also be used to compensate for flow and density measurement internally.



## 2. Performance Characteristics

### 2.1. Accuracy and Repeatability

#### 2.1.1. Accuracy and Repeatability of Liquid Measurement

**Table 1: Accuracy and Repeatability of Liquid Mass Flow**

Performance Specifications	Option 1	Option 2
Mass Flow Accuracy	±0.1% (TD = 10:1)	±0.15% (TD = 15:1)
Maximum Allowable Error	±0.1% (Instantaneous flow/maximum flow>1:10)	±0.15% (Instantaneous flow/maximum flow>1:15)
	±Zero point stability*/ instantaneous flow x 100% (Instantaneous flow/maximum flow≤1:10)	±Zero point stability/ instantaneous flow x 100% (Instantaneous flow/maximum flow≤1:15)
Mass Flow Repeatability	1/2 x the maximum allowable error	
Temperature Accuracy	±1°C±(0.5% x measured value)	
Temperature Repeatability	0.2°C	

Note:

1. For liquid mass flow measurement, there are two accuracy levels to choose from. Option 1 refers to Accuracy 0.1% while Option 2 refers to Accuracy 0.15%;
2. TD (range ratio) = ratio of the maximum measurable flow rate to the minimum measurable flow rate;
3. Zero point stability is explained and listed in

**Table 2: Accuracy and Repeatability of Liquid Volume Flow**

Performance Specifications	Option 1	Option 2
Volume Flow Accuracy	$\pm 0.15\% \pm (\text{zero point stability/instantaneous flow}) \times 100\%$	$\pm 0.2\% \pm (\text{zero point stability/instantaneous flow}) \times 100\%$
Volume Flow Repeatability	$0.075\% \pm 1/2 (\text{zero point stability/instantaneous flow}) \times 100\%$	$0.1\% \pm 1/2 (\text{zero point stability/instantaneous flow}) \times 100\%$
Temperature Accuracy	$\pm 1^\circ\text{C} \pm 0.5\% \times \text{measured value}$	
Temperature Repeatability	0.2°C	

*Note: When the flow value is lower than zero stability/0.005, accuracy =  $\pm (\text{zero stability/flow value}) \times 100\%$ , and repeatability =  $1/2 (\text{zero stability/flow value}) \times 100\%$*

**Table 3: Accuracy and Repeatability of Liquid Density**

Performance Specifications	All Models	All Models
Liquid Density Accuracy	$\pm 0.001 \text{ g/cm}^3$	$\pm 1 \text{ kg/m}^3$
Liquid Density Repeatability	$0.0005 \text{ g/cm}^3$	$0.5 \text{ kg/m}^3$
Measuring Range	$0.2 \text{ g/cm}^3 - 3 \text{ g/cm}^3$	$200 \text{ kg/m}^3 - 3000 \text{ kg/m}^3$

*Note: The density error of  $\pm 2 \text{ kg/m}^3$  is based on water at 20 °C and 0.1~0.2 MPa reference conditions ;*

## 2.1.2. Accuracy and Repeatability of Gas Measurement

**Table 4: Accuracy and Repeatability of Gas Volume Flow**

Performance Specifications	Option 1	Option 2
Volume Flow Accuracy	$\pm 0.5\%$	$\pm 1\%$
Repeatability of Volume Flow	0.2%	0.5%
Temperature Accuracy	$\pm 1^\circ\text{C} \pm 0.5\% \times \text{measured value}$	
Temperature Repeatability	0.2 °C	

*Note: For gas mass flow measurement, there are two accuracy levels to choose from. Option 1 refers to Accuracy 0.5% while Option 2 refers to Accuracy 1%;*

**Standard volume:** In most applications, users are still accustomed to using standard volume under certain pressure and temperature. For fluids with fixed components, standard volume is also called "quasi-mass" flow unit. Using the density under standard conditions (obtained from reference materials), the flow meter can be configured to output in standard volume units, that is, the measured fluid mass and the introduced fluid standard density are converted without pressure, temperature or density compensation.

**Pressure loss:** The geometry of the sensor, the density of the gas and the flow rate determine the pressure loss of the gas after passing through the flow meter. It is recommended that the pressure loss of the flow meter should not exceed 0.127MPa during the selection.

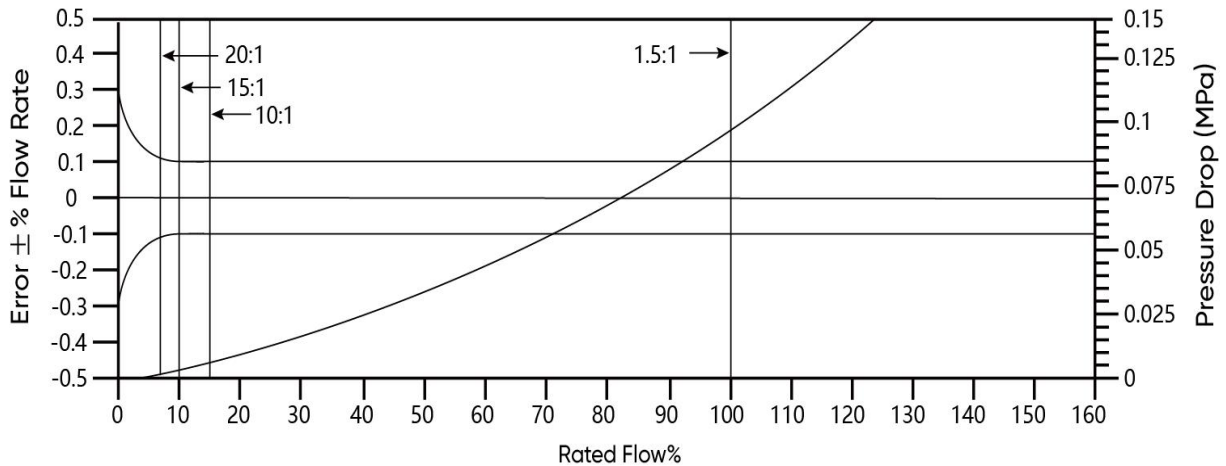
**Flow rate:** The flow rate when measuring gas is much greater than the flow rate when measuring liquid. The noise generated by high flow rate will affect the signal of the flow meter. When the pressure loss of the flow meter is less than 0.127MPa, the flow rate in the sensor tube should be less than 0.5 times the speed of sound.

## 2.2. Relationship between Range Ratio, Accuracy and Pressure Drop

**Table 5: Relationship between range ratio, accuracy and pressure drop**

Maximum Range Ratio	20:1	15:1	10:1	1.5:1	1:1
Accuracy (error)	0.20%	0.15%	0.10%	0.10%	0.10%
Pressure Drop (MPa)	0.001	0.002	0.015	0.1	0.2

*Note: Range ratio is the ratio of the maximum measurable flow rate to the minimum measurable flow rate;*



### 2.3. Liquid Flow and Zero Point Stability under Different Calibers

Parameter Meter Size	Mass Flow Rate (kg/h)		Volume Flow Rate (L/h)		Zero Stability (kg/h)
	Rated Flow	Maximum Flow	Rated Flow	Maximum Flow	
DN2	100	120	100	120	0.005
DN3	300	350	300	350	0.018
DN6	1,000	1,500	1,000	1,500	0.075
DN10	1,800	2,700	1,800	2,700	0.135
DN15	3,000	4,500	3,000	4,500	0.225
DN20	7,000	10,500	7,000	10,500	0.5
DN25	18,000	27,000	18,000	27,000	1.3
DN40	27,000	40,500	27,000	40,500	2.1
DN50	50,000	75,000	50,000	75,000	4.5
DN80	160,000	240,000	160,000	240,000	12
DN100	360,000	540,000	3 60,000	5 40,000	27

### 2.4. Temperature Indicators and Temperature Influence

#### 2.4.1. Medium and Ambient Temperature

Performance Specifications	Integral Mount	Remote Mount	Storage Temperature	Operating Temperature
Medium Temperature	-50°C~+125°C	-50°C~+350°C	-50°C~+ 70°C	-50°C~+ 70°C
Ambient Temperature				
Temperature Display Range	-50°C~+ 70°C			

### 2.4.2. Ambient Temperature Influence

The process temperature effect is defined as:

- For mass flow measurement, process temperature effect is the maximum zero deviation caused by the process fluid temperature varying from the zero adjustment temperature.
- For density measurement, process temperature effect refers to the maximum measurement deviation caused by the process fluid temperature varying from the density calibration temperature.

Parameter Meter Size	Process Temperature Effect	
	%Maximum Flow Rate/°C	Density Error/°C (kg/m <sup>3</sup> )
DN2	±0.0002	±0.015
DN3	±0.0002	±0.015
DN6	±0.0001	±0.015
DN10	±0.0001	±0.015
DN15	±0.0001	±0.015
DN20	±0.0001	±0.015
DN25	±0.0001	±0.015
DN40	±0.0001	±0.015
DN50	±0.0001	±0.015
DN80	±0.0001	±0.015
DN100	±0.0001	±0.015

## 2.5. Pressure Levels and Pressure Influence

Parameter Meter Size	Pressure Level		Pressure Influence	
	Standard Pressure Resistance (MPa)	Maximum Pressure Resistance (MPa)	Influence of Pressure on Flow Error (% Flow Value/MPa)	Influence of Pressure on Density Error (kg/m <sup>3</sup> /MPa)
DN2	4	10	/	/
DN3	4	10	/	/
DN6	4	10	/	/
DN10	4	10	/	/
DN15	4	10	/	0.58
DN20	4	10	/	-0.29
DN25	4	10	-0.03	-0.87
DN40	4	10	-0.11	0.145
DN50	4	10	- 0.11	0.145
DN80	4	10	- 0.25	0.029
DN100	4	10	- 0.58	- 1.45

Note:

- 10MPa < Maximum pressure resistance (optional) < 26MPa;
- Pressure influence: the change in sensor's flow and density sensitivity caused by the process pressure deviating from the calibration pressure. Pressure influence can be corrected.
- The maximum calibration pressure used by HIKMICRO is 0.4 MPa.

## 2.6. Vibration Limitation

At  $a = 1g$  ( $g = 9.8 \text{ m/s}^2$ ) and sweep frequency under (5~2000) Hz, the device can withstand 10 cycles. If vibration exceeds  $a=0.5g$ , remote mount installation is recommended.

### 3. Specification Overview

Mass Flow Accuracy (Fluid)	0.1%, 0.15%
Mass Flow Repeatability (Fluid)	0.05%, 0.075%
Volume Flow Accuracy (Gas)	0.5%, 1%
Volume Flow Repeatability (Gas)	0.2%, 0.5%
Density Accuracy	0.001 g/cm <sup>3</sup>
Density Repeatability	0.0005 g/cm <sup>3</sup>
Temperature Accuracy	±1°C±0.5% x measured value
Temperature Repeatability	0.2 °C
Meter Size	DN2-DN100 (can be customized above DN100)
Wetted Parts Material	316L, HC
Process Connection	Flanged, Tri-clamp
Process Pressure Range	≤4MPa
Process Medium Temperature Range	-40°C ~200°C (-40°F ~392°F)
Temperature Compensation	Yes
Housing of Transmitter	Aluminum alloy
Housing of Sensor	304
Control Button Type	Touch button
Sensor Protection Rating	IP66/67
Communication Type	4~20mA, Pulse, Modbus, Hart
Power Supply	24V DC and 220V AC (Adaptive), Max. 10 W
Working Temperature/Humidity	-40°C~60°C (-40°F~140°F), ≤98%

## 4. Mechanical Construction

### 4.1. Material

Structural components	Location	Material
Wetted Parts	Sensitive Tube	316L, HC
	Reducer	316L, HC
	Divider	316L, HC
	Flange	316L, HC
Housing	Sensor	304, Conformal coating
	Transmitter	Cast aluminum alloy (exterior sprayed with epoxy polyurethane)
	Junction Box	Cast aluminum alloy (exterior sprayed with epoxy polyurethane)

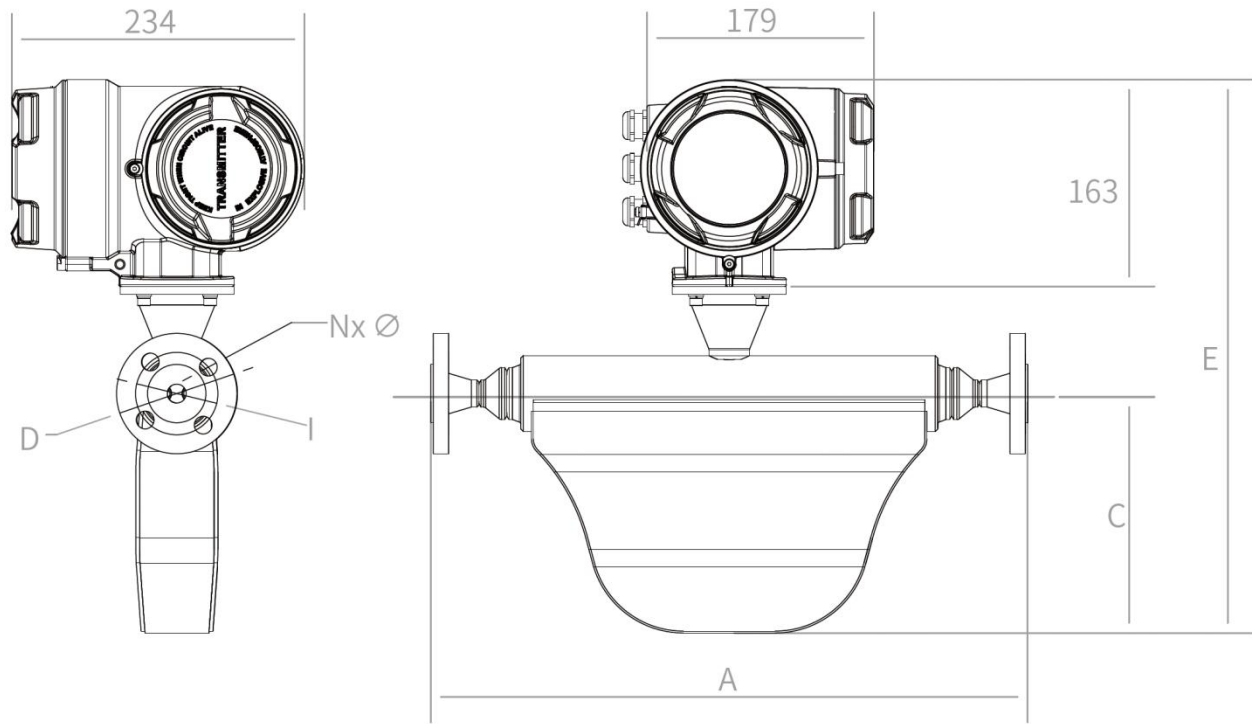
### 4.2. Weight

Structure Meter Size	Integral Mount (kg)	Remote Mount (kg)
DN2	8	5
DN3	8	5
DN6	10	7
DN10	10	7
DN15	11	8.5
DN20	15	12
DN25	18.5	15.5
DN40	23.5	20.5
DN50	49	46
DN80	93	92
DN100	203	200

*Note: The weight provided is the weight of the flow meter with GB/T 91 24.1-2019 PN40 raised face welding steel pipe flange.*

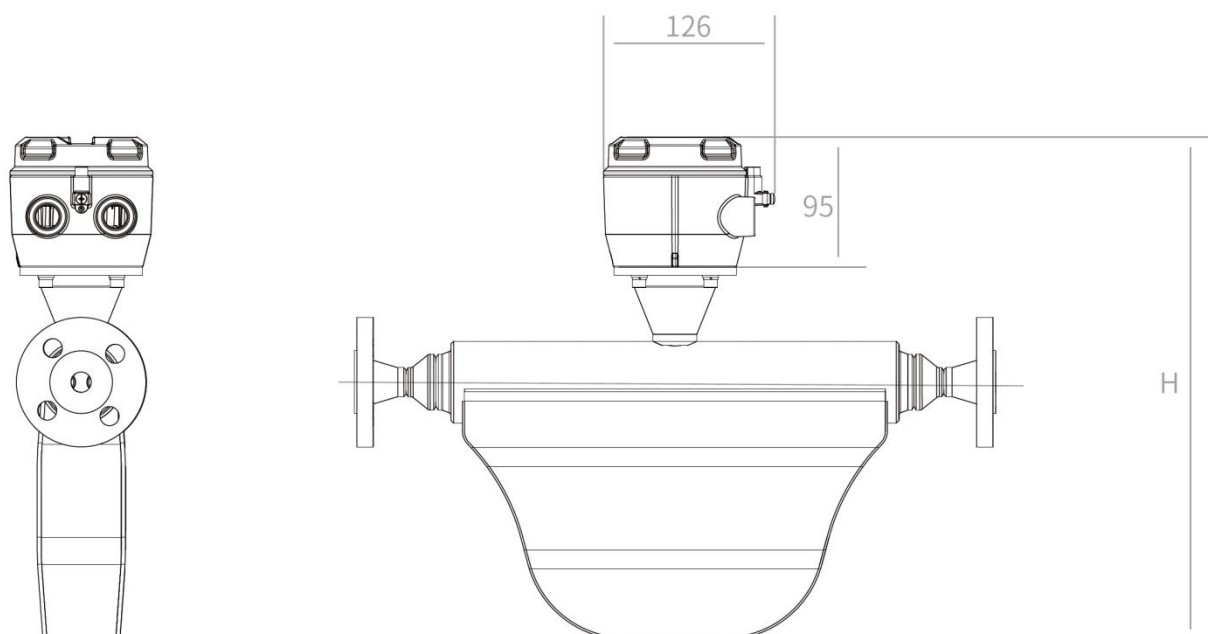
### 4.3. Dimension

#### 4.3.1. Integral Mount

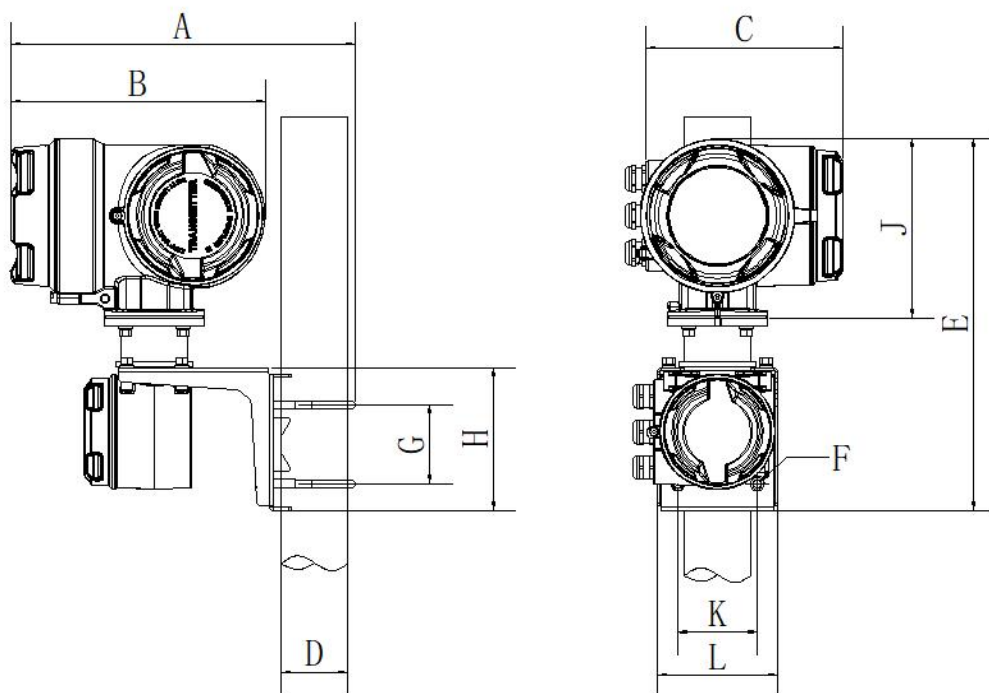


Meter Size	Process Connection Size	Process Connection Standard (GB/T9124.1-2019)						Process Connection Standard (ASME B16.5-2009)						C	E
		Pressure Standard	A	I	D	N	$\varnothing$	Pressure Standard	A	I	D	N	$\varnothing$		
C2	DN15	PN40	305	65	95	4	14	Class300	335	66.7	95	4	16	105	372
C3		PN63	319	75	105	4	14	Class150	325	60.3	90	4	16		
C6	DN15	PN40	443	65	95	4	14	Class300	473	66.7	95	4	16	171	415
C10		PN63	457	75	105	4	14	Class150	463	60.3	90	4	16		
C15	DN15	PN40	468	65	95	4	14	Class300	498	66.7	95	4	16	189	433
		PN63	482	75	105	4	14	Class150	488	60.3	90	4	16		
C20	DN25	PN40	534	85	115	4	14	Class300	573	88.9	125	4	18	214	466
		PN63	570	100	140	4	18	Class150	561	79.4	110	4	16		
C25	DN25	PN40	560	85	115	4	14	Class300	604	88.9	125	4	18	239	493
		PN63	596	100	140	4	18	Class150	592	79.4	110	4	16		
C40	DN40	PN40	562	110	150	4	18	Class300	610	114.3	155	4	22	247	521
		PN63	596	125	170	4	22	Class150	596	98.4	125	4	16		
C50	DN50	PN40	817	125	165	4	18	Class300	861	127	165	8	18	276	555
		PN63	845	135	180	4	22	Class150	849	120.7	150	4	18		
C80	DN80	PN16	1014	160	200	8	18	Class300	1076	168.3	210	8	22	361	652
		PN40	1030	160	200	8	18	Class150	1056	152.4	190	4	18		
		PN63	1058	170	215	8	22								
C100	DN100	PN16	1144	180	220	8	18	Class300	1212	200	255	8	22	420	723
		PN40	1170	190	235	8	22	Class150	1194	190.5	230	8	18		
		PN63	1196	200	250	8	22								

### 4.3.2. Remote Mount



Meter Size	Process Connection Size	H	Flange and sensor dimensions are consistent with the integral mount type
C2 / C3	DN15	304	
C6 / C10	DN15	347	
C15	DN15	365	
C20	DN25	398	
C25	DN25	425	
C40	DN40	453	
C50	DN50	487	
C80	DN80	584	
C100	DN100	655	



A (mm)	B (mm)	C (mm)	D (mm)	E (mm)	F (mm)	G (mm)	H (mm)	J (mm)	K (mm)	L (mm)
313	231	179	60	339	M8	72	131	163	72	110

## 5. Ordering Information

The model code of HIKMICRO Coriolis Mass Flow Meter is explained below. Each item



- |                                                                                                                                                                                                                                                                                                                                            |                                                                                                                                                                                                                                                                                                                                 |
|--------------------------------------------------------------------------------------------------------------------------------------------------------------------------------------------------------------------------------------------------------------------------------------------------------------------------------------------|---------------------------------------------------------------------------------------------------------------------------------------------------------------------------------------------------------------------------------------------------------------------------------------------------------------------------------|
| <ul style="list-style-type: none"> <li>A. Base Model-Coriolis Mass Flow Meter</li> <li>B. Series</li> <li>C. Meter Size</li> <li>D. Process Connection Standard</li> <li>E. Process Connection Size</li> <li>F. Pipeline Pressure Standard</li> <li>G. Flange Sealing Surface Type</li> <li>H. Accuracy</li> <li>I. Temp. Range</li> </ul> | <ul style="list-style-type: none"> <li>J. Structure Type</li> <li>K. Explosion-proof</li> <li>L. Sensor Protection Rating</li> <li>M. Wetted Parts Material</li> <li>N. Sensor Housing Material</li> <li>O. Transmitter Housing Material</li> <li>P. Output Signal</li> <li>Q. Power Supply</li> <li>R. Sealing Plug</li> </ul> |
|--------------------------------------------------------------------------------------------------------------------------------------------------------------------------------------------------------------------------------------------------------------------------------------------------------------------------------------------|---------------------------------------------------------------------------------------------------------------------------------------------------------------------------------------------------------------------------------------------------------------------------------------------------------------------------------|

from A to R must be specified at the time of ordering.

### 5.1. Model Code Description

Model Code Position	Model Code	Description
<b>Base Model-Coriolis Mass Flow Meter</b>		
A	HM-FC	Product Category
<b>Series</b>		
B	00	Product Series
<b>Meter Size</b>		
C	002	C2 (Equivalent to the flow capacity of DN2)
C	003	C3 (Equivalent to the flow capacity of DN3)
C	006	C6 (Equivalent to the flow capacity of DN6)
C	010	C10 (Equivalent to the flow capacity of DN10)
C	015	C15 (Equivalent to the flow capacity of DN15)
C	020	C20 (Equivalent to the flow capacity of DN20)
C	025	C25 (Equivalent to the flow capacity of DN25)

C	040	C40 (Equivalent to the flow capacity of DN40)
C	050	C50 (Equivalent to the flow capacity of DN50)
C	080	C80 (Equivalent to the flow capacity of DN80)
C	100	C100 (Equivalent to the flow capacity of DN100)
<b>Process Connection Standard</b>		
D	J	JIS B2220
D	E	EN1092-1
D	A	ASME B16.5
D	T	Tri-clamp ISO2852
<b>Process Connection Size</b>		
E	015	DN15
E	020	DN20
E	025	DN25
E	032	DN32
E	040	DN40
E	050	DN50
E	080	DN80
E	100	DN100
E	150	DN150
<b>Pressure Standard</b>		
F	D1	PN06
F	D2	PN10
F	D3	PN16
F	D4	PN25
F	D5	PN40
F	D6	PN63
F	D9	PN250
F	C1	Class 150
F	C2	Class 300
F	C4	Class 600



F	J1	5K
F	J2	10K
F	J3	16K
F	J4	20K
<b>Flange Sealing Surface Type</b>		
G	B	RF (Raised Face)
<b>Accuracy</b>		
H	B	0.1% (Liquid)
H	C	0.15% (Liquid)
H	F	0.5%(Gas)
H	G	1% (Gas)
<b>Temp. Range</b>		
I	R	-40°C~80°C
I	S	-40°C~125°C
I	T	-40°C~200°C
<b>Structure Type</b>		
J	E00	Integral mount
J	S02	Remote mount with 2m signal line length
J	S05	Remote mount with 5m signal line length
J	S07	Remote mount with 7m signal line length
J	S10	Remote mount with 10m signal line length
<b>Explosion-proof</b>		
K	N	Non-explosion-proof
K	D	Explosion-proof (CNEx/NEPSI)
<b>Sensor Protection Rating</b>		
L	E	IP66/67
<b>Wetted Parts Material</b>		
M	M	316L
M	H	HC22
<b>Sensor Housing Material</b>		



N	S	304
N	E	304+Electric Heat Trace Jacket
Transmitter Housing Material		
O	A	Aluminum
Output Signal		
P	1	4~20 mA + (Pulse/4~20 mA) + MODBUS
P	2	4~20 mA + (Pulse/4~20mA)+ HART+MODBUS
P	3	(Pulse/4~20 mA) + MODBUS
Power Supply		
Q	S	Adaptive power supply
Sealing Plug		
R	E	1/2NPT nylon cable gland
R	D	1/2NPT explosion-proof cable gland
R	A	M20x1.5 nylon cable gland
R	C	M20x1.5 stainless steel explosion-proof cable gland

## 5.2. Selection Table

# Coriolis Mass Flow Meter

X	X	X	X	X	X	X	X	X	X	X	X	X	X	X	X	X	X
<b>Series</b> 00 Series 00																	
<b>Meter Size</b> C2 (Equivalent to the flow capacity of DN2) 002 C3 (Equivalent to the flow capacity of DN3) 003 C6 (Equivalent to the flow capacity of DN6) 006 C10 (Equivalent to the flow capacity of DN10) 010 C15 (Equivalent to the flow capacity of DN15) 015 C20 (Equivalent to the flow capacity of DN20) 020 C25 (Equivalent to the flow capacity of DN25) 025 C40 (Equivalent to the flow capacity of DN40) 040 C50 (Equivalent to the flow capacity of DN50) 050 C80 (Equivalent to the flow capacity of DN80) 080 C100 (Equivalent to the flow capacity of DN100) 100																	
<b>Process Connection Standard</b> Tri-clamp ISO2852 T JIS B2220 J EN1092-1 E ASME B16.5 A																	
<b>Process Connection Size</b> DN15 015 DN20 020 DN25 025 DN32 032 DN40 040 DN50 050 DN80 080 DN100 100 DN150 150																	
<b>Pressure Standard</b> PNO6 D1 PN10 D2 PN16 D3 PN25 D4 PN40 D5 PN63 D6 PN250 D9 Class 150 C1 Class 300 C2 Class 600 C4 5K J1 10K J2 16K J3 20K J4																	
<b>Flange Sealing Surface Type</b> RF (Raised Face) B																	
<b>Sealing Plug</b> E 1/2NPT cable gland A M20x1.5 nylon cable gland D 1/2NPT explosion-proof cable gland C M20x1.5 stainless steel explosion-proof cable gland																	
<b>Power Supply</b> S Adaptive power supply																	
<b>Output Signal</b> 1 4~20 mA + (Pulse/4~20 mA) + MODBUS 2 4~20 mA + (Pulse/4~20mA)+ HART+ MODBUS 3 (Pulse/4~20 mA) + MODBUS																	
<b>Transmitter Housing Material</b> A Aluminum																	
<b>Sensor Housing Material</b> S 304 E 304+ Electric Heat Trace Jacket																	
<b>Wetted Parts Material</b> M 316L H HC22																	
<b>Sensor Protection Rating</b> E IP66/67																	
<b>Explosion-proof</b> N Non-explosion-proof D Explosion-proof (CNEx/NEPSI)																	
<b>Structure Type</b> E00 Integral mount S02 Remote mount with 2m signal line length S05 Remote mount with 5m signal line length S07 Remote mount with 7m signal line length S10 Remote mount with 10m signal line length																	
<b>Temp. Range</b> R -40 C~80 C S -40 C~125 C T -40 C~200 C																	
<b>Accuracy</b> B 0.1% (Liquid) C 0.15% (Liquid) F 0.5% (Gas) G 1% (Gas)																	

# HIKMICRO

## Coriolis Mass Flow Meter

 Hikmicro Industrial  
 HIKMICRO

 hikmicro\_industrial  
 [www.hikmicrotech.com](http://www.hikmicrotech.com)

 HIKMICRO Industrial  
 [info@hikmicrotech.com](mailto:info@hikmicrotech.com)